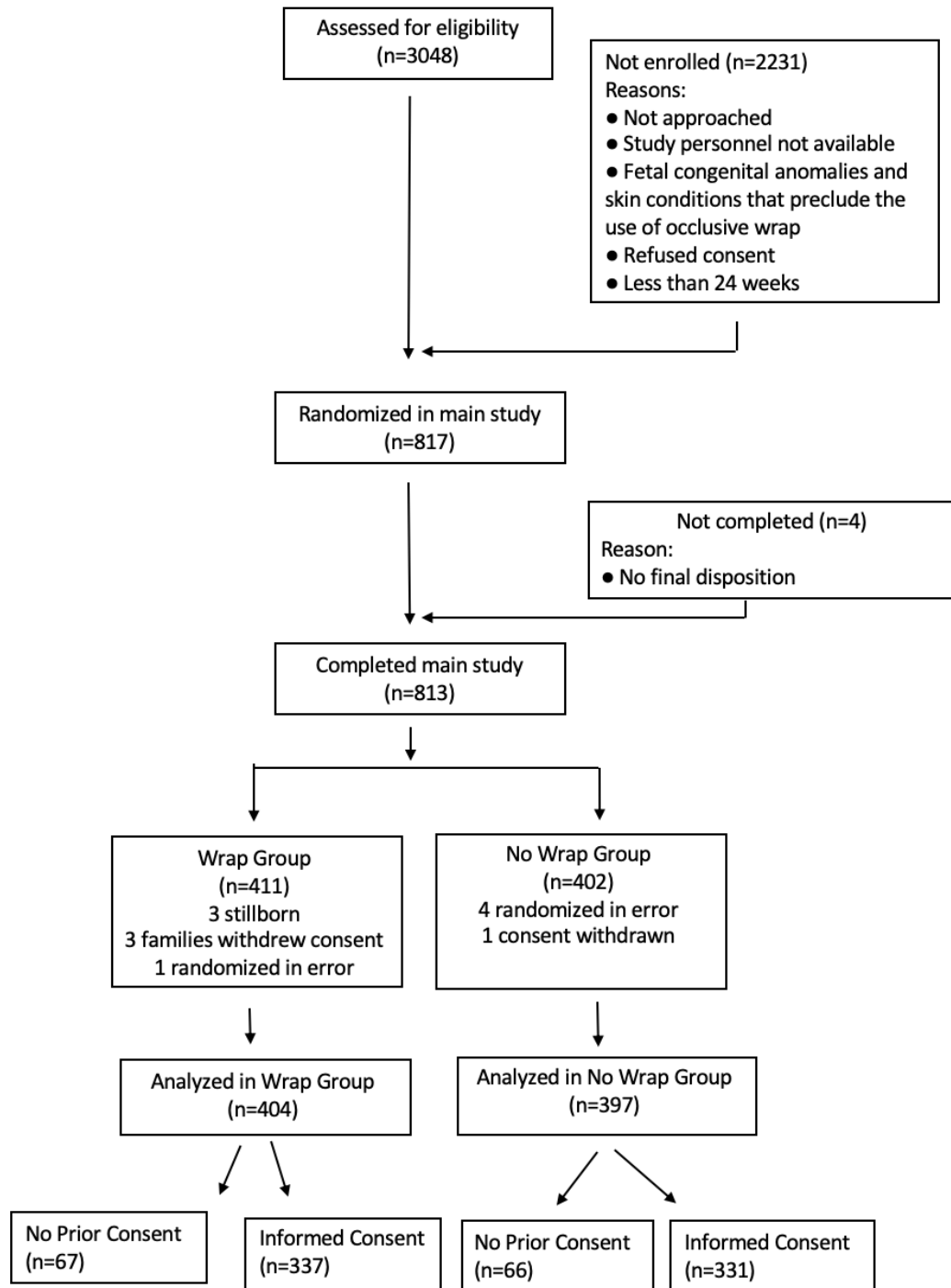


Appendix A – Figure 1 Number of infants eligible for the Vermont Oxford Network Heat Loss Prevention Trial and randomly assigned to the wrap or no wrap group<sup>13</sup>



## Appendix B – Table 3 Characteristics of the centres in the VON HeLP Trial

**HELP Trial Centres (N=38)**

|   | N (%)        |
|---|--------------|
| Teaching Hospital                                 | 29 (76.3)    |
| Ownership   |              |
| Government  | 11 (28.9)    |
| Non-Profit  | 23 (60.5)    |
| Investor  | 2 (5.3)      |
| Other   | 2 (5.3)      |
| Children's Hospital                               | 5 (13.2)     |
| NICU Type   |              |
| A   | 6 (15.8)     |
| B   | 23 (60.5)    |
| C   | 9 (23.7)     |
| Admissions per year 2005-2010<br>(median, Q1, Q3) | 473,370, 662 |

**Type A** - Centres which have a restriction on assisted ventilation or which only perform minor surgery.

**Type B** - Centres with no restriction on assisted ventilation and which perform major surgery. Major surgery includes one or more of the following: omphalocele repair; ventriculo peritoneal shunt; repair TEF/oesophageal atresia; bowel resection/reanastomosis; meningo-myelocele repair; cardiac catheterization or PDA ligation.

**Type C** - Centres that perform cardiac surgery requiring bypass for newborn infants.