



OPEN ACCESS

# Targeted screening for congenital cytomegalovirus infection: clinical, audiological and neuroimaging findings

Pui Khi Chung <sup>1</sup>, Fleurtje Schornagel,<sup>1</sup> Anne Marie Oudesluys-Murphy,<sup>2</sup> Linda S de Vries,<sup>2</sup> Wim Soede,<sup>3</sup> Erik van Zwet,<sup>4</sup> Ann Vossen<sup>1</sup>

► Additional supplemental material is published online only. To view, please visit the journal online (<http://dx.doi.org/10.1136/archdischild-2022-324699>).

<sup>1</sup>Medical Microbiology, Leiden University Medical Center, Leiden, The Netherlands

<sup>2</sup>Willem-Alexander Children's Hospital, Leiden University Medical Center, Leiden, The Netherlands

<sup>3</sup>Center for Audiology at the Department of Otorhinolaryngology, Leiden University Medical Center, Leiden, The Netherlands

<sup>4</sup>Department of Biomedical Data Sciences, Leiden University Medical Center, Leiden, The Netherlands

## Correspondence to

Pui Khi Chung, Medical Microbiology, Leiden University Medical Center, Leiden, 2333 ZA, The Netherlands; [p.k.chung@lumc.nl](mailto:p.k.chung@lumc.nl)

PKC and FS contributed equally.

Received 26 July 2022

Accepted 27 November 2022

## ABSTRACT

**Objective** To evaluate clinical, audiological and neuroimaging findings in a cohort of infants diagnosed with congenital cytomegalovirus (cCMV) infection after failure at newborn hearing screening.

**Methods** A prospective observational study in the Netherlands, using the existing newborn hearing screening infrastructure for well babies. Between July 2012 and November 2016, cytomegalovirus (CMV) PCR testing of neonatally obtained dried blood spots (DBS) was offered to all infants who failed newborn hearing screening. Clinical, neuroimaging and audiological data were collected.

**Results** DBS of 1374 infants were successfully tested and 59 were positive for CMV (4.3%). Data of 54 infants were retrieved. Three were small for gestational age and six had microcephaly. Forty-eight (89%) had sensorineural hearing loss (SNHL), of whom half had unilateral SNHL. In both unilaterally and bilaterally affected children, the majority of the impaired ears had severe or profound hearing loss. Neuroimaging abnormalities were found in 40 of 48 (83%) children who had evaluable cranial ultrasound and/or cerebral MRI. The abnormalities were mild in 34, moderate in 3 and severe in 3 infants. The degree of SNHL and the severity of neuroimaging abnormalities were found to be correlated ( $p=0.002$ ).

**Conclusions** The yield of targeted cCMV screening following newborn hearing screening failure was eight times higher than the estimated national birth prevalence of cCMV. The majority of this cohort of infants with clinically unsuspected cCMV disease had confirmed SNHL, neuroimaging abnormalities and lower than average birth weights and head circumferences. Newborns who fail newborn hearing screening should be tested for CMV to ensure appropriate clinical, neurodevelopmental and audiological follow-up.

## INTRODUCTION

Congenital cytomegalovirus (cCMV) infection is the most common congenital infection worldwide and the leading cause of non-genetic hearing loss (HL).<sup>1</sup> The birth prevalence in the developed countries is approximately 0.7%.<sup>2</sup> The majority (90%) are born without clinically apparent disease, but approximately 13.5% of these 'asymptomatic' infants develop permanent sequelae such as sensorineural HL (SNHL) and developmental delay.<sup>2,3</sup> One of the approaches to identify at-risk babies is targeted cytomegalovirus (CMV) screening after newborn hearing screening failure. Expedited cCMV diagnosis allows for possible antiviral

## WHAT IS ALREADY KNOWN ON THIS TOPIC

⇒ Congenital cytomegalovirus (cCMV) infection is the leading non-genetic cause of hearing loss. Targeted salivary cCMV screening within the newborn hearing screening programme is recognised as feasible and is implemented in some US states and trialled in other regions. Neuroimaging and clinical data of these limited cohorts are scarce.

## WHAT THIS STUDY ADDS

⇒ Targeted dried blot spot screening for cCMV of infants who failed newborn hearing screening yields an eightfold increase of diagnoses (4.3%) compared with the general newborn population (0.54%). The majority (83%) of these infants with cCMV and sensorineural hearing loss show abnormalities on neuroimaging that are mostly mild. The severity of neuroimaging abnormalities and degree of hearing loss were found to be associated.

## HOW THIS STUDY MIGHT AFFECT RESEARCH, PRACTICE OR POLICY

⇒ This study shows that targeted dried blood spot screening following newborn hearing screening failure has a high yield. The results give insight in neuropathogenesis, support clinical care and will help guide decisions on implementation of cCMV screening.

treatment, as well as early assessment of potential neurological, developmental and ophthalmological sequelae. Previous studies exploring incorporated targeted CMV screening into newborn hearing screening programmes suggest favourable cost-effectiveness.<sup>4-8</sup> While several reports of ongoing screening programmes offer insight into the feasibility of targeted screening, details on clinical, audiological and neuroimaging findings are scarce.<sup>9-14</sup> In case of future implementation, clinicians could increasingly encounter infants with cCMV and seemingly isolated HL. More data on this patient population are needed to provide appropriate parental guidance on treatment and prognosis.

Therefore, the aim of this study is to describe the clinical, audiological and neuroimaging characteristics of a cohort of infants diagnosed with cCMV after failing newborn hearing screening. This targeted screening approach, in which CMV testing was performed on neonatally obtained dried blood spots (DBS), was carried out as part of the



© Author(s) (or their employer(s)) 2022. Re-use permitted under CC BY-NC. No commercial re-use. See rights and permissions. Published by BMJ.

**To cite:** Chung PK, Schornagel F, Oudesluys-Murphy AM, et al. *Arch Dis Child Fetal Neonatal Ed* Epub ahead of print: [please include Day Month Year]. doi:10.1136/archdischild-2022-324699

CONCERT Study, a non-randomised trial in which the effect of 6-week valganciclovir was compared with no treatment.

## METHODS

### Study design and population

This observational study used the existing newborn hearing screening infrastructure for well babies in the Netherlands. Screening takes place in a maximum of three rounds: the first and second rounds using oto-acoustic emissions, the third round using automated auditory brainstem response (ABR) technology. After failing the third round, infants are referred to a regional audiology centre (AC). During the CONCERT trial, CMV testing was offered to all referred infants. The current study describes all cCMV-positive infants for whom written informed consent was obtained to retrieve baseline clinical data. The subgroup of infants eligible for inclusion in the trial had cCMV and SNHL, was aged <13 weeks, born at  $\geq 37$  weeks' gestational age and had a birth weight  $> -2$  SD.

### CMV testing

Following informed consent, DBS were retrieved from the National Institute of Health and Environment. CMV PCR was performed on DBS sampled in the first week of life through routine heel prick screening. Using a whole blood spot (50  $\mu$ L input volume), DNA was extracted using the Qiagen mini kit (from July 2012) or the Magna Pure 96 System (from July 2016). Next, a real-time CMV PCR assay with a detection limit of <500 IU/mL was performed in triplicate on each DBS as previously described.<sup>15 16</sup> If at least one in three replicates was positive in the initial DBS, a confirmatory PCR was performed and similarly interpreted in a newly requested DBS sample.

### Clinical, audiological and neuroimaging assessments

Following cCMV diagnosis, parents were informed of the possibility to participate in the CONCERT trial and advised to seek paediatric consultation regardless of participation. Trial subjects underwent screening, consisting of medical history taking, physical examination and laboratory assessments (complete blood count, liver and kidney function tests). Decisions on referral for neuroimaging and ophthalmological examination were left

to the paediatrician. Audiological, ophthalmological, neuroimaging data and, if subjects were excluded from the CONCERT trial, clinical data, were retrieved from consulted specialists. Audiological assessments by regional ACs consisted of routinely performed click and/or tone burst ABR and tympanometry. Raw baseline data were reviewed by two experienced audiologists. The hearing threshold was determined as the lowest level with a peak V response. SNHL was defined as  $>20$  dB perceptive unilateral or bilateral HL and categorised as follows: mild 21–40 dB, moderate 41–70 dB, severe 71–90 dB, profound  $>90$  dB.<sup>17</sup> Thresholds of ears with mixed perceptive and conductive HL were analysed as observed. Neuroimaging data were classified in blinded fashion according to the previously published Alarcon criteria<sup>18</sup> by LSdV. All clinical centres used high-resolution cranial ultrasound (cUS) and MRI (1.5 or 3 Tesla) including sagittal and axial T1-weighted and T2-weighted images.

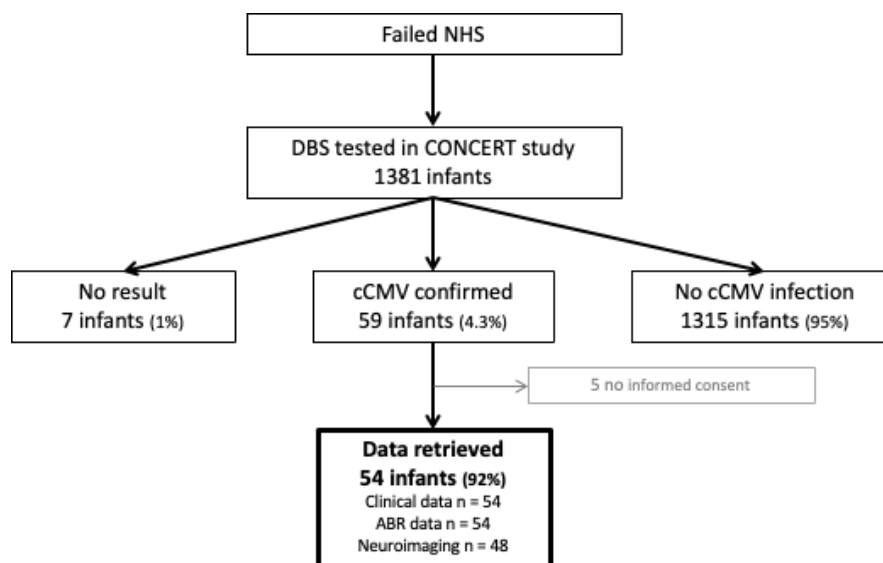
### Statistical analysis

Birth weight and head circumference SD were derived using Growth Analyzer Research Calculation Tools (V.4.1, Growth Analyzer, Rotterdam, the Netherlands). Ordinal logistic regression analysis was used to examine the association between the degree of SNHL and neuroimaging abnormalities, as well as the relation between head circumference and neuroimaging abnormalities. In these analyses, mean hearing thresholds per ear for each patient were calculated. In case of normal hearing or conductive HL, the threshold was set at 10 dB. In case of profound HL without any measured responses, 110 dB was noted. Statistical analyses were performed with IBM SPSS software V.25.

## RESULTS

### Study participants

Between July 2012 and November 2016, 1381 children were enrolled for cCMV testing. PCR results of seven samples were not available: three due to insufficient blood, three due to internal PCR control failure and one due to sample loss. Of the 1374 DBS analysed, 59 were positive for CMV, yielding a cCMV prevalence of 4.3%. Informed consent for data retrieval was obtained for 54 of 59 infants (figure 1).



**Figure 1** Enrolment of study participants. ABR, auditory brainstem response; cCMV, congenital cytomegalovirus; DBS, dried blood spot; NHS, newborn hearing screening.

**Table 1** Clinical and audiological characteristics of 54 infants with cCMV infection and failed newborn hearing screening

Characteristics	cCMV-infected infants (n=54)	
Infant sex, male, n (%)	25 (46)	
Gestational age at birth, weeks, mean (SD)	39.3 (1.7)	
Age at cCMV diagnosis, days, mean (SD)	50 (24.3)	
Birth weight mean SD (95% CI)	-0.48 (-0.72 to -0.23)	
<-2	3 (6)	
-2 to +2	51 (94)	
>+2	0	
Head circumference mean SD (95% CI)*	-0.70 (-1.04 to -0.35)	
<-2	6 (12)	
-2 to +2	45 (88)	
>+2	0	
Audiological outcome, n	54	
Unilateral conductive hearing loss, n (%)	3 (6)	
Bilateral conductive hearing loss, n (%)	3 (6)	
SNHL, n (%)	48 (89)	
Unilateral SNHL, n (%)	24 (50)	
Bilateral SNHL, n (%)	24 (50)	
<b>ABR results for SNHL</b>	<b>Unilateral†</b>	<b>Bilateral‡</b>
	<b>24 ears (%)</b>	<b>48 ears (%)</b>
Mild hearing loss (21–40 dB)	0	5 (10)
Moderate hearing loss (41–70 dB)	4 (17)	9 (19)
Severe hearing loss (71–90 dB)	4 (17)	11 (23)
Profound hearing loss (>90 dB)	16 (66)	23 (48)

\*Data available for 51 infants in the first 6 months of life.  
†Six ears had mixed hearing loss (conductive combined with SNHL). The hearing threshold and type of loss are registered as observed by the audiologist.  
‡Fifteen ears with mixed hearing loss (conductive combined with SNHL). The hearing threshold is registered as observed by the audiologist.  
ABR, auditory brainstem response; cCMV, congenital cytomegalovirus; CI, confidence interval; dB, decibel; SD, standard deviation; SNHL, sensorineural hearing loss.

### Clinical and audiological characteristics

Gestational ages ranged from 32 to 42 weeks with two infants born preterm (32 and 36 weeks' gestation) both with birth weights  $>-1$  SD. Six infants had microcephaly (head circumference  $<-2$  SD), with birth weights ranging from  $-2.19$  to  $-0.17$  SD (table 1). Our study population had significantly lower birth weights and smaller head circumferences compared with the general population (online supplemental figure 1). No ophthalmological abnormalities were found in the 33 infants examined. One infant had jaundice with elevated bilirubin levels (total bilirubin  $212 \mu\text{mol/L}$ , direct bilirubin  $185 \mu\text{mol/L}$ ) and liver enzymes (aspartate aminotransferase  $228 \text{U/L}$ ; alanine aminotransferase  $188 \text{U/L}$ ) at the age of 15 days.

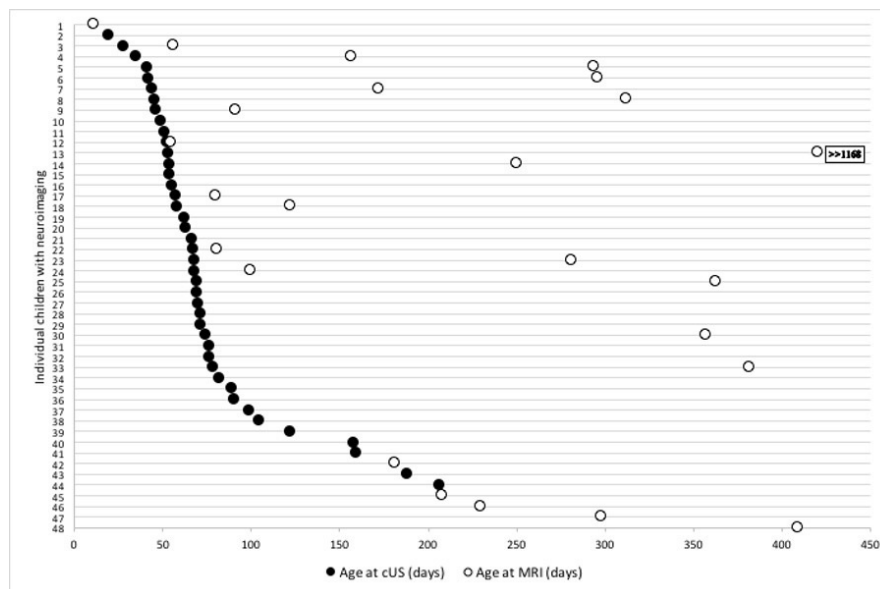
ABR results were evaluable in 54 infants at a median age of 37 days (IQR 27–51 days). Forty-eight (89%) were diagnosed with SNHL or mixed HL. Of these, 24 (50%) infants had bilateral HL. In the infants with bilateral HL, 34 ears (71%) were found to have severe or profound HL, and 20 (83%) infants with unilateral HL were diagnosed with severe or profound HL (table 1).

### Neuroimaging

Neuroimaging was evaluable in 48 of 54 infants: cUS in 24, MRI in 6 and both in 18 infants. cUS was performed at a median age of 67.5 days (IQR 52–79 days), whereas the median age at MRI was 219 days (IQR 93–308 days) (figure 2). cUS was usually performed by radiologists and MRIs were performed in case of cUS abnormalities or cochlear implant (CI) indication.

Abnormalities were found in 40 of 48 children (83%); 34 (71%) had mild abnormalities (score 1), 3 (6%) had moderate (score 2) and 3 (6%) had severe abnormalities (score 3) (table 2). Moderate abnormalities included severe ventriculomegaly, temporal lobe involvement and diffuse white matter signal abnormalities. The severe abnormalities found were polymicrogyria in all three patients; one patient additionally showed extensive calcifications, atrophy and dysgenesis of corpus callosum.

Four of the six infants with microcephaly ( $-3.88$  to  $-2.02$  SD) had Alarcon score 1 and two with head circumferences of

**Figure 2** Age distribution at cUS and MRI investigations (n=48). cUS, cranial ultrasound.

**Table 2** Alarcon scoring and hearing data of 48 children with cCMV and evaluable neuroimaging

Alarcon score	n	Neuroimaging			Hearing		
		Modality	N	Abnormalities (n)	Normal	Unilateral SNHL	Bilateral SNHL
0 No abnormalities	8	cUS	6	None	1	5	2
		MRI	1				
		Both	1				
1 Mild abnormalities	34	cUS	18	Single calcifications (1), LSV (11), GLC (5), mild VM (8)	1	18	15
		MRI	2	Mild VM (1), (multi) focal WM signal abnormality (2)			
		Both	14	<b>cUS</b> LSV (6) GLC (9) Single calcification (2) Mild VM (1)			
2 Moderate abnormalities	3	cUS	0		0	1	2
		MRI	1	Mild VM, diffuse WM signal abnormality			
		Both	2	<b>cUS</b> LSV (2) GLC (1)			
3 Severe abnormalities	3	cUS	0		0	1	2
		MRI	2	(Multi)focal WM signal abnormality (1) PMG (2)			
		Both	1	<b>cUS</b> LSV Mild VM Extensive calcification Atrophy Suspected PMG Dysgenesis of CC			

Alarcon classification: 0=none of the following abnormalities; 1=single punctate periventricular calcification, LSV, caudothalamic germinolysis, VM (excluding severe) and/or focal/multifocal WM signal abnormality on MRI; 2=multiple discrete periventricular calcifications, paraventricular GLC, severe VM, diffuse WM signal abnormality and/or temporal lobe involvement; 3=extensive calcifications, brain atrophy, abnormal gyration, cortical malformation, dysgenesis of the CC and/or cerebellar hypoplasia. CC, corpus callosum; cUS, cranial ultrasound; GLC, germinolytic cyst; LSV, lenticulostriate vasculopathy; PMG, polymicrogyria; SNHL, sensorineural hearing loss; VM, ventriculomegaly; WM, white matter.

−4.14 and −2.83 SD had polymicrogyria, resulting in Alarcon scores of 3. An association between head circumference and Alarcon score was found (figure 3A,  $p=0.002$ ).

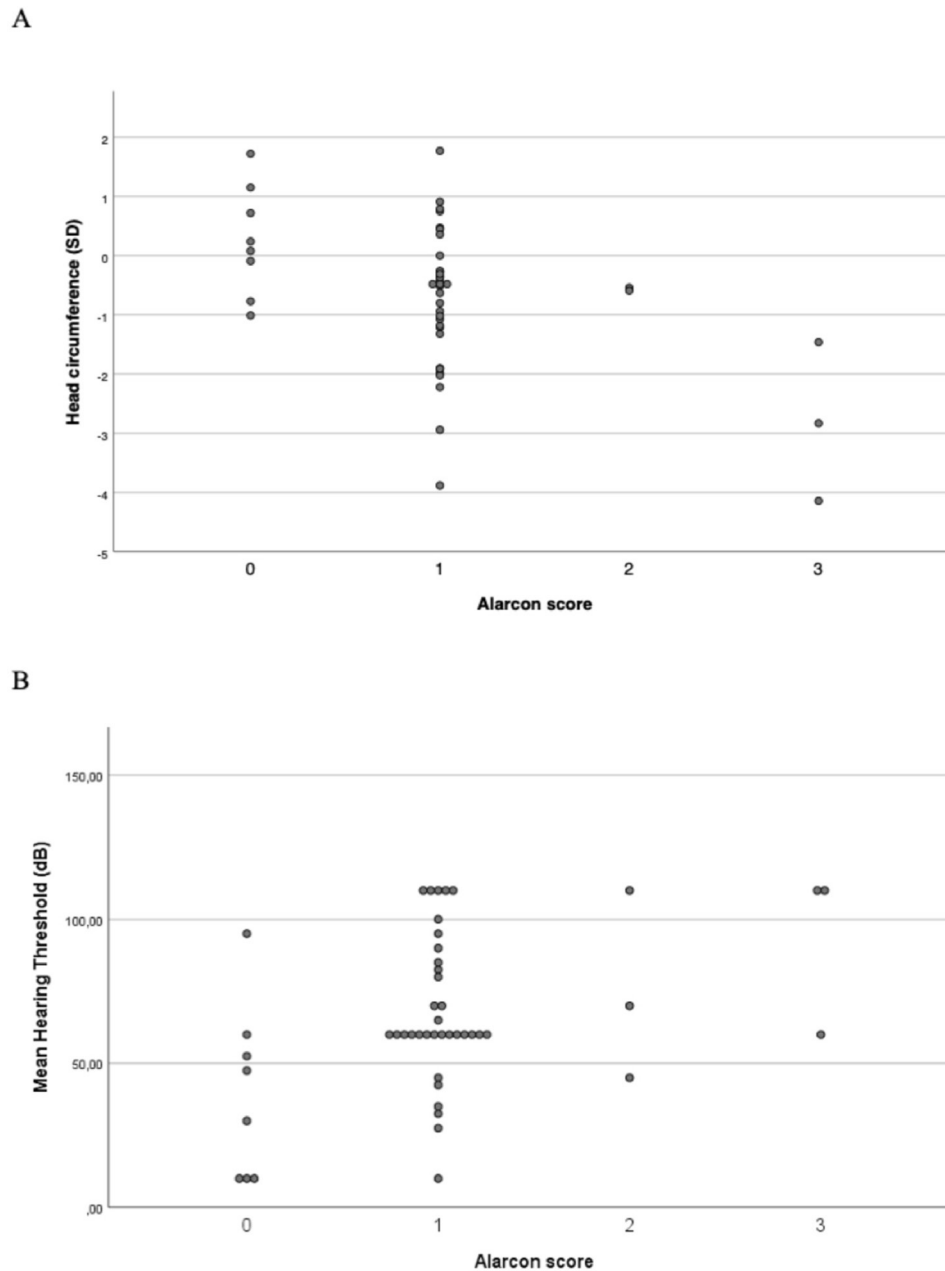
SNHL was diagnosed in 44 of 48 children with evaluable neuroimaging and audiological data (table 2). An association was found between the severity of neuroimaging abnormalities and of SNHL (figure 3B,  $p=0.002$ ). Correcting for mixed HL had no effect on the found correlation.

## DISCUSSION

To our knowledge, this is the first study to describe detailed data of a significant cohort of infants with cCMV detected through targeted screening. Furthermore, while targeted saliva screening is implemented and trialled in some regions, this is the first report of a nationwide targeted screening study using DBS. The prevalence of cCMV (4.3%) in our study population was eight times higher than the national birth prevalence of 0.54%,<sup>19</sup> and the majority of infants were diagnosed with SNHL (87%). Previous newborn hearing screening-based screening studies report a cCMV prevalence between 0.6% and 4.7%, of whom 50%–83% had HL at the time of diagnosis.<sup>9 11 12 20</sup> Our relatively high yield of both cCMV and confirmed HL cases may be explained by our sensitive three-round newborn hearing screening. In the Netherlands, 99.6% of all well babies are screened, of which 0.3% fail the newborn hearing screening. Of these, 35%–40% are diagnosed with unilateral or bilateral HL.<sup>21</sup> Most European countries, the UK and USA report an newborn hearing

screening fail rate between 1.5% and 2%, with confirmed HL in 5%–10%.<sup>22</sup> A higher proportion of confirmed HL in a targeted screening population is likely to result in a higher detection rate of cCMV. Indeed, Rawlinson *et al*, who only included infants with confirmed HL in their targeted screening study, detected probable and definite cCMV in 5.6% of infants.<sup>23</sup> The high percentage of children with confirmed HL could also in part be due to selection bias. Although we offered testing to all infants following newborn hearing screening failure and tested the majority of all referrals (60%), parents could have been more inclined to consent for CMV testing after HL confirmation at the AC. Unfortunately, audiological data from CMV-negative or CMV-untested newborn hearing screening fails were unavailable.

Eighty-three per cent of infants were found to have neuroimaging abnormalities on cUS and/or MRI, in most cases these were mild. Recent studies report imaging abnormalities of 0%–33% in ‘asymptomatic’ and 64%–76% in ‘symptomatic’ cCMV.<sup>24 25</sup> Blazquez-Gamero *et al* found 69% cUS and/or MRI abnormalities in a cohort of 107 mostly ‘symptomatic’ (72%) subjects, while Lucignani *et al* reported 79.5% MRI abnormalities in a smaller cohort with 27 of 44 (61.3%) ‘symptomatic’ subjects.<sup>26 27</sup> However, data on neuroimaging findings in infants with isolated HL are scarce. Hranilovich *et al* reviewed MRIs of a retrospective cohort diagnosed by targeted newborn hearing screening failure-based screening, describing one or more abnormalities in 10 of 17 patients (59%).<sup>28</sup> Another study described 11 of 15 (73%) children as having abnormal MRI findings.<sup>23</sup>



**Figure 3** Relationship between Alarcon score and (A) head circumference (n=46), and (B) sensorineural hearing loss (n=48).

The added assessments of cUS could explain our higher proportion of abnormal neuroimaging.

The use of the Alarcon score enabled us to examine the relation between the degree of neuroimaging abnormalities and SNHL at birth. The correlation found indicates that while infants with severe HL may also have mild imaging abnormalities, children with severe neuroimaging abnormalities are most likely to also have severe bilateral HL. Biologically, it makes sense that neuropathology following an intrauterine infection would lead to both more neuroimaging abnormalities and SNHL. Still, the majority of our considerable cohort with mostly severe SNHL have only mild neuroimaging abnormalities. Apart from microcephaly in six infants, none showed neurological abnormalities at birth. Thus, severe HL does not necessarily imply severe neuroimaging abnormalities and a subsequent adverse neurodevelopmental prognosis. This is noteworthy, since the presence of SNHL could be expected to result from vertical CMV transmission during

the first trimester of pregnancy.<sup>29–33</sup> Our findings suggest that early vertical transmission more often leads to isolated inner ear disease than widespread central nervous system (CNS) pathology. Preclinical pathogenesis studies are needed to explore this research gap.

Our study has limitations. First, because CMV testing was part of a trial, our study population does not reflect a hypothetical nationwide targeted screening cohort. Our population may be skewed towards term babies of normal birth weight, due to the inclusion criteria of the CONCERT trial, although the current study does include subjects excluded from the trial. Second, we performed CMV testing on DBS, rather than urine or saliva, the gold standard used in earlier targeted screening studies. Although PCR on DBS is less sensitive than on urine or saliva, we estimate that our DBS procedure has a sensitivity of at least 84% and a specificity of 99.9%.<sup>34</sup> With a prevalence of around 5% in this cohort, the positive and negative predictive values are 98% and



99%, respectively. Moreover, using DBS has obvious advantages in our unique local setting. In the Netherlands, there is a high homebirth rate and an infrastructure for maternity care at home for well babies. As a result, both hearing screening and heel prick testing are routinely performed at home, making saliva or urine collection impractical and DBS a convenient alternative for incorporating targeted screening into existing programmes. In addition, since we chose to enrol after third round failure, which increases yield and reduces cost, many infants would have been missed if testing was due within 21 days. Indeed, in our cohort, informed consent for CMV testing was obtained within 21 days in only 35% of infants.

Finally, the main limitation of our study is the fact that infants were not subjected to a standardised neuroimaging protocol, resulting in lack of MRI data and different timing of imaging if both modalities were performed, MRI having been performed at a much later age. White matter signal intensity abnormalities have been reported to become less apparent over time,<sup>35 36</sup> although the prognostic value of isolated white matter abnormalities for long-term sequelae is still debated.<sup>37</sup> In the 24 infants who only underwent cUS, abnormalities such as migrational disorders and white matter abnormalities may have been missed. This may have led to an underestimation of CNS abnormalities in our study. A recent study found 93 of 480 (19%) children with cCMV with normal cUS to have abnormal findings on MRI.<sup>38</sup> Conversely, the lack of an imaging protocol may have also led to selection bias towards a more severely affected group as the subgroup of patients with an MRI had abnormalities on cUS or an indication for CI placement. More data are needed in similar cohorts of isolated SNHL, in which both cUS and MRI are performed in a standardised protocol, preferably shortly after birth.

## CONCLUSIONS

This is the largest and most clinically detailed account of a targeted screening cohort of infants with cCMV. The majority in our cohort had confirmed SNHL, neuroimaging abnormalities and lower than average birth weights and head circumferences. A high prevalence of neuroimaging abnormalities in infants with CMV and HL could have therapeutic consequences as the current consensus is to start antiviral treatment in case of CNS involvement, although the definition of CNS involvement regarding mild abnormalities is still under debate.<sup>39</sup> Long-term studies using both cUS and MRI are needed to determine the clinical consequences of these imaging abnormalities and treatment benefits in this subpopulation. In the meantime, these findings underscore the need for appropriate follow-up in infants with cCMV and seemingly isolated HL.

An early diagnosis of cCMV as the cause of HL will improve parental counselling, while raising awareness of possible neurodevelopmental sequelae and facilitating timely hearing and language rehabilitation. Consequently, newborns who fail newborn hearing screening should be tested for CMV.

**Acknowledgements** We are grateful to all parents who gave consent for CMV diagnostics in the CONCERT Study. We thank all cooperating region coordinators of the newborn hearing screening programme, for informing parents of newborn hearing screening-referred infants about the availability of CMV diagnostics; the Department for Vaccine Supply and Prevention Programs at the National Institute for Public Health and the Environment for providing the DBS cards; and Dick Biesheuvel for his advice and contribution in extracting audiological data. Finally, we acknowledge the hard work of Lisette Rusman and Caroline de Brouwer in testing the dried blood spots.

**Contributors** PKC and FS contributed equally to this work. PKC carried out the analyses and drafted the manuscript. FS conceptualised and designed the study, collected data, carried out the analyses, reviewed and revised the manuscript.

AV acted as guarantor, conceptualised and designed the study, supervised data collection, reviewed and revised the manuscript. AMO-M conceptualised and designed the study and reviewed and revised the manuscript. LSdV assessed neuroimaging data and reviewed and revised the manuscript. WS assessed audiological data and reviewed and revised the manuscript for audiological content. EvZ provided statistical support and revised the manuscript for statistical content. All authors approved the final manuscript as submitted and agree to be accountable for all aspects of the work.

**Funding** This study was Supported by Fonds NutsOhra (project number 0901-054).

**Competing interests** The authors declare that they have no known competing financial interests or personal relationships that could have appeared to influence the work reported in this paper. The authors declare the following non-financial interests/personal relationships which may be considered as potential competing interests: AMO-M is a member of the national advisory board on newborn hearing screening, which is an unpaid function.

**Patient consent for publication** Not required.

**Ethics approval** The CONCERT trial (ClinicalTrials.gov: NCT02005822) was approved by the Medical Ethical Committee of the Leiden University Medical Center (Study P13.168, File nr: NL45593.058.13). Informed consent was requested for CMV diagnostics after newborn hearing screening failure and before clinical trial participation. In addition, written informed consent for data retrieval for the current study was requested from parents or legal guardians of all cCMV-positive infants.

**Provenance and peer review** Not commissioned; externally peer reviewed.

**Data availability statement** Data are available upon reasonable request. A dataset was generated and analysed and would be available upon reasonable request directly to the authors.

**Supplemental material** This content has been supplied by the author(s). It has not been vetted by BMJ Publishing Group Limited (BMJ) and may not have been peer-reviewed. Any opinions or recommendations discussed are solely those of the author(s) and are not endorsed by BMJ. BMJ disclaims all liability and responsibility arising from any reliance placed on the content. Where the content includes any translated material, BMJ does not warrant the accuracy and reliability of the translations (including but not limited to local regulations, clinical guidelines, terminology, drug names and drug dosages), and is not responsible for any error and/or omissions arising from translation and adaptation or otherwise.

**Open access** This is an open access article distributed in accordance with the Creative Commons Attribution Non Commercial (CC BY-NC 4.0) license, which permits others to distribute, remix, adapt, build upon this work non-commercially, and license their derivative works on different terms, provided the original work is properly cited, appropriate credit is given, any changes made indicated, and the use is non-commercial. See: <http://creativecommons.org/licenses/by-nc/4.0/>.

## ORCID iD

Pui Khi Chung <http://orcid.org/0000-0002-3176-3233>

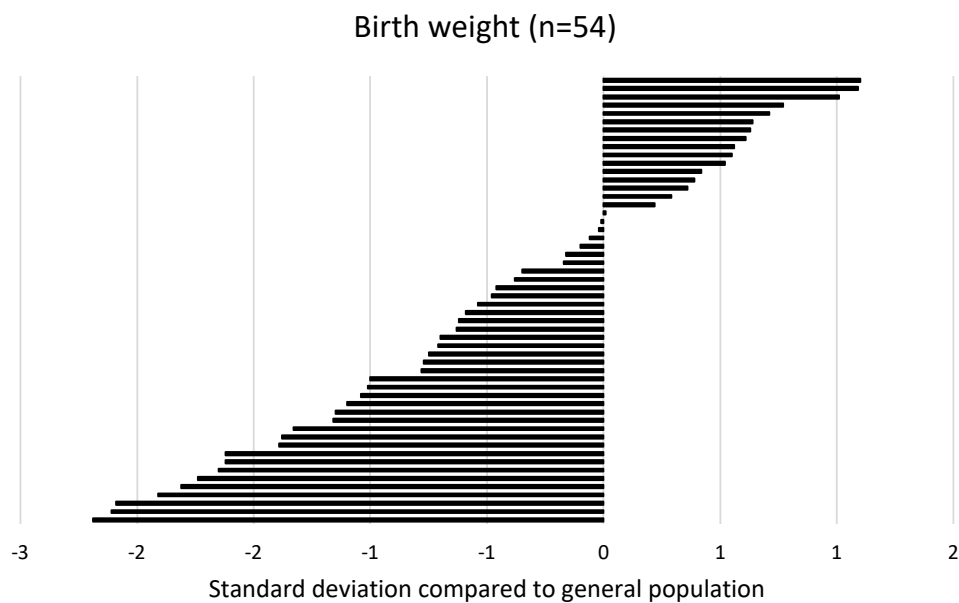
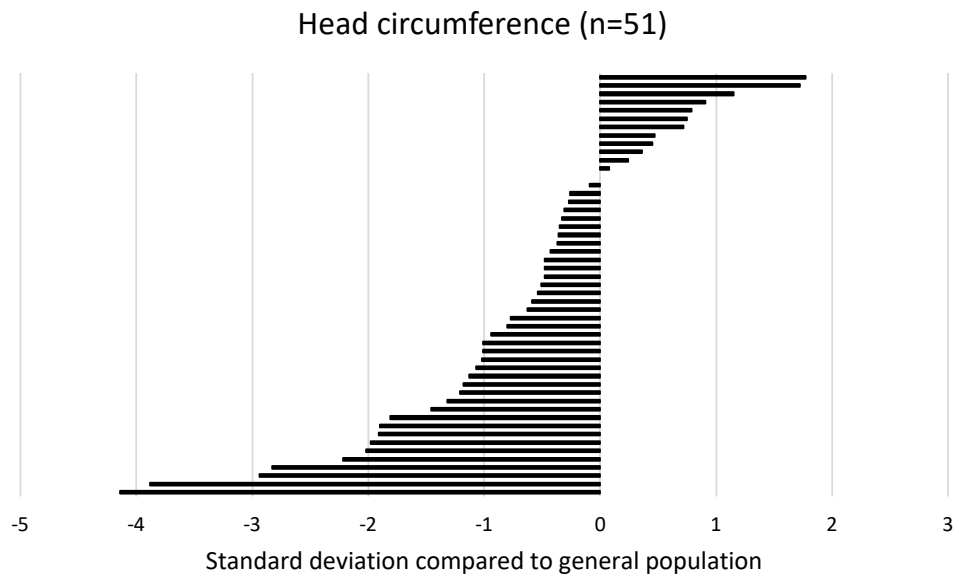
## REFERENCES

- Grosse SD, Ross DS, Dollard SC. Congenital cytomegalovirus (CMV) infection as a cause of permanent bilateral hearing loss: a quantitative assessment. *J Clin Virol* 2008;41:57–62.
- Dollard SC, Grosse SD, Ross DS. New estimates of the prevalence of neurological and sensory sequelae and mortality associated with congenital cytomegalovirus infection. *Rev Med Virol* 2007;17:355–63.
- Korndewal MJ, Oudesluis-Murphy AM, Kroes ACM, et al. Long-term impairment attributable to congenital cytomegalovirus infection: a retrospective cohort study. *Dev Med Child Neurol* 2017;59:1261–8.
- Gantt S, Dionne F, Kozak FK, et al. Cost-effectiveness of universal and targeted newborn screening for congenital cytomegalovirus infection. *JAMA Pediatr* 2016;170:1173–80.
- Williams EJ, Gray J, Luck S, et al. First estimates of the potential cost and cost saving of protecting childhood hearing from damage caused by congenital CMV infection. *Arch Dis Child Fetal Neonatal Ed* 2015;100:F501–6.
- Beswick R, David M, Higashi H, et al. Integration of congenital cytomegalovirus screening within a newborn hearing screening programme. *J Paediatr Child Health* 2019;55:1381–8.
- Grosse SD, Dollard SC, Ortega-Sanchez IR. Economic assessments of the burden of congenital cytomegalovirus infection and the cost-effectiveness of prevention strategies. *Semin Perinatol* 2021;45:151393.
- Bergevin A, Zick CD, McVicar SB, et al. Cost-benefit analysis of targeted hearing directed early testing for congenital cytomegalovirus infection. *Int J Pediatr Otorhinolaryngol* 2015;79:2090–3.
- Williams EJ, Kadambari S, Berrington JE, et al. Feasibility and acceptability of targeted screening for congenital CMV-related hearing loss. *Arch Dis Child Fetal Neonatal Ed* 2014;99:F230–6.

- 10 Diener ML, Zick CD, McVicar SB, *et al.* Outcomes from a Hearing-Targeted cytomegalovirus screening program. *Pediatrics* 2017;139.
- 11 Ari-Even Roth D, Lubin D, Kuint J, *et al.* Contribution of targeted saliva screening for congenital CMV-related hearing loss in newborns who fail hearing screening. *Arch Dis Child Fetal Neonatal Ed* 2017;102:F519–24.
- 12 Vancor E, Shapiro ED, Loyal J. Results of a targeted screening program for congenital cytomegalovirus infection in infants who fail newborn hearing screening. *J Pediatric Infect Dis Soc* 2018.
- 13 Webb E, Gillespie AN, Poulakis Z, *et al.* Feasibility and acceptability of targeted salivary cytomegalovirus screening through universal newborn hearing screening. *J Paediatr Child Health* 2022;58:288–94.
- 14 Fourgeaud J, Boithias C, Walter-Nicolet E, *et al.* Performance of targeted congenital cytomegalovirus screening in newborns failing universal hearing screening: a multicenter study. *Pediatr Infect Dis J* 2022;41:478–81.
- 15 Kalpoe JS, Kroes ACM, de Jong MD, *et al.* Validation of clinical application of cytomegalovirus plasma DNA load measurement and definition of treatment criteria by analysis of correlation to antigen detection. *J Clin Microbiol* 2004;42:1498–504.
- 16 de Vries JJC, Claas ECJ, Kroes ACM, *et al.* Evaluation of DNA extraction methods for dried blood spots in the diagnosis of congenital cytomegalovirus infection. *J Clin Virol* 2009;46 Suppl 4:S37–42.
- 17 Audiophonology IBf. BIAP recommendation 02/1: audiometric classification of hearing impairments, 1996. Available: <https://www.biap.org/en/recommendations/recommendations/tc-02-classification/213-rec-02-1-en-audiometric-classification-of-hearing-impairments/file>
- 18 Alarcon A, Martinez-Biarge M, Cabañas F, *et al.* A prognostic neonatal neuroimaging scale for symptomatic congenital cytomegalovirus infection. *Neonatology* 2016;110:277–85.
- 19 de Vries JJC, Korver AMH, Verkerk PH, *et al.* Congenital cytomegalovirus infection in the Netherlands: birth prevalence and risk factors. *J Med Virol* 2011;83:1777–82.
- 20 Kawada J-ichi, Torii Y, Kawano Y, *et al.* Viral load in children with congenital cytomegalovirus infection identified on newborn hearing screening. *J Clin Virol* 2015;65:41–5.
- 21 Uilenburg N, Van der Ploeg C, van der Zee R, *et al.* From neonatal hearing screening to intervention: results of the Dutch program for neonatal hearing screening in well babies. *Int J Neonatal Screen* 2018;4:27.
- 22 Neumann K. A survey on the global status of newborn and infant hearing screening. *JEHDI* 2020;5:63–84.
- 23 Rawlinson WD, Palasanthiran P, Hall B, *et al.* Neonates with congenital cytomegalovirus and hearing loss identified via the universal newborn hearing screening program. *J Clin Virol* 2018;102:110–5.
- 24 Vande Walle C, Keymeulen A, Schiettecatte E, *et al.* Brain MRI findings in newborns with congenital cytomegalovirus infection: results from a large cohort study. *Eur Radiol* 2021;31:8001–10.
- 25 Giannattasio A, Bruzese D, Di Costanzo P, *et al.* Neuroimaging profiles and neurodevelopmental outcome in infants with congenital cytomegalovirus infection. *Pediatr Infect Dis J* 2018;37:1028–33.
- 26 Blázquez-Gamero D, Soriano-Ramos M, Martínez de Aragón A, *et al.* Role of magnetic resonance imaging and cranial ultrasonography in congenital cytomegalovirus infection. *Pediatr Infect Dis J* 2019;38:1131–7.
- 27 Lucignani G, Rossi Espagnet MC, Napolitano A, *et al.* A new MRI severity score to predict long-term adverse neurologic outcomes in children with congenital cytomegalovirus infection. *J Matern Fetal Neonatal Med* 2021;34:859–866.
- 28 Hranilovich JA, Park AH, Knackstedt ED, *et al.* Brain magnetic resonance imaging in congenital cytomegalovirus with failed newborn hearing screen. *Pediatr Neurol* 2020;110:55–8.
- 29 Lipitz S, Yinon Y, Malinger G, *et al.* Risk of cytomegalovirus-associated sequelae in relation to time of infection and findings on prenatal imaging. *Ultrasound Obstet Gynecol* 2013;41:508–14.
- 30 Foulon I, Naessens A, Foulon W, *et al.* Hearing loss in children with congenital cytomegalovirus infection in relation to the maternal trimester in which the maternal primary infection occurred. *Pediatrics* 2008;122:e1123–7.
- 31 Pass RF, Fowler KB, Boppana SB, *et al.* Congenital cytomegalovirus infection following first trimester maternal infection: symptoms at birth and outcome. *J Clin Virol* 2006;35:216–20.
- 32 Faure-Bardon V, Magny JF, Parodi M, *et al.* Sequelae of congenital cytomegalovirus (cCMV) following maternal primary infection are limited to those acquired in the first trimester of pregnancy. *Clinical infectious diseases : an official publication of the Infectious Diseases Society of America* 2018.
- 33 Foulon I, De Brucker Y, Buyl R, *et al.* Hearing loss with congenital cytomegalovirus infection. *Pediatrics* 2019;144. doi:10.1542/peds.2018-3095. [Epub ahead of print: 02 07 2019].
- 34 Wang L, Xu X, Zhang H, *et al.* Dried blood spots PCR assays to screen congenital cytomegalovirus infection: a meta-analysis. *Virol J* 2015;12:60.
- 35 Krakar G, Đaković I, Delin S, *et al.* Evolutive leukoencephalopathy in congenital cytomegalovirus infection. *J Child Neurol* 2015;30:93–5.
- 36 Suganuma E, Oka A, Sakata H, *et al.* 10-year follow-up of congenital cytomegalovirus infection complicated with severe neurological findings in infancy: a case report. *BMC Pediatr* 2018;18:369.
- 37 Uematsu M, Haginoya K, Kikuchi A, *et al.* Asymptomatic congenital cytomegalovirus infection with neurological sequelae: a retrospective study using umbilical cord. *Brain Dev* 2016;38:819–26.
- 38 Keymeulen A, De Leenheer E, Casaer A, *et al.* Cranial ultrasound and MRI: complementary or not in the diagnostic assessment of children with congenital CMV infection? *Eur J Pediatr* 2022;181:911–920.
- 39 Luck SE, Wieringa JW, Blázquez-Gamero D, *et al.* Congenital cytomegalovirus: a European expert consensus statement on diagnosis and management. *Pediatr Infect Dis J* 2017;36:1205–13.

**Supplemental material**

*S1 Figure 1. Head circumference measured in the first six months after birth (n = 51 infants) and birth weight (n = 54 infants) displayed as standard deviations compared to the general population*





**Supplemental material**

*S1 Figure 1. Head circumference measured in the first six months after birth (n = 51 infants) and birth weight (n = 54 infants) displayed as standard deviations compared to the general population*

