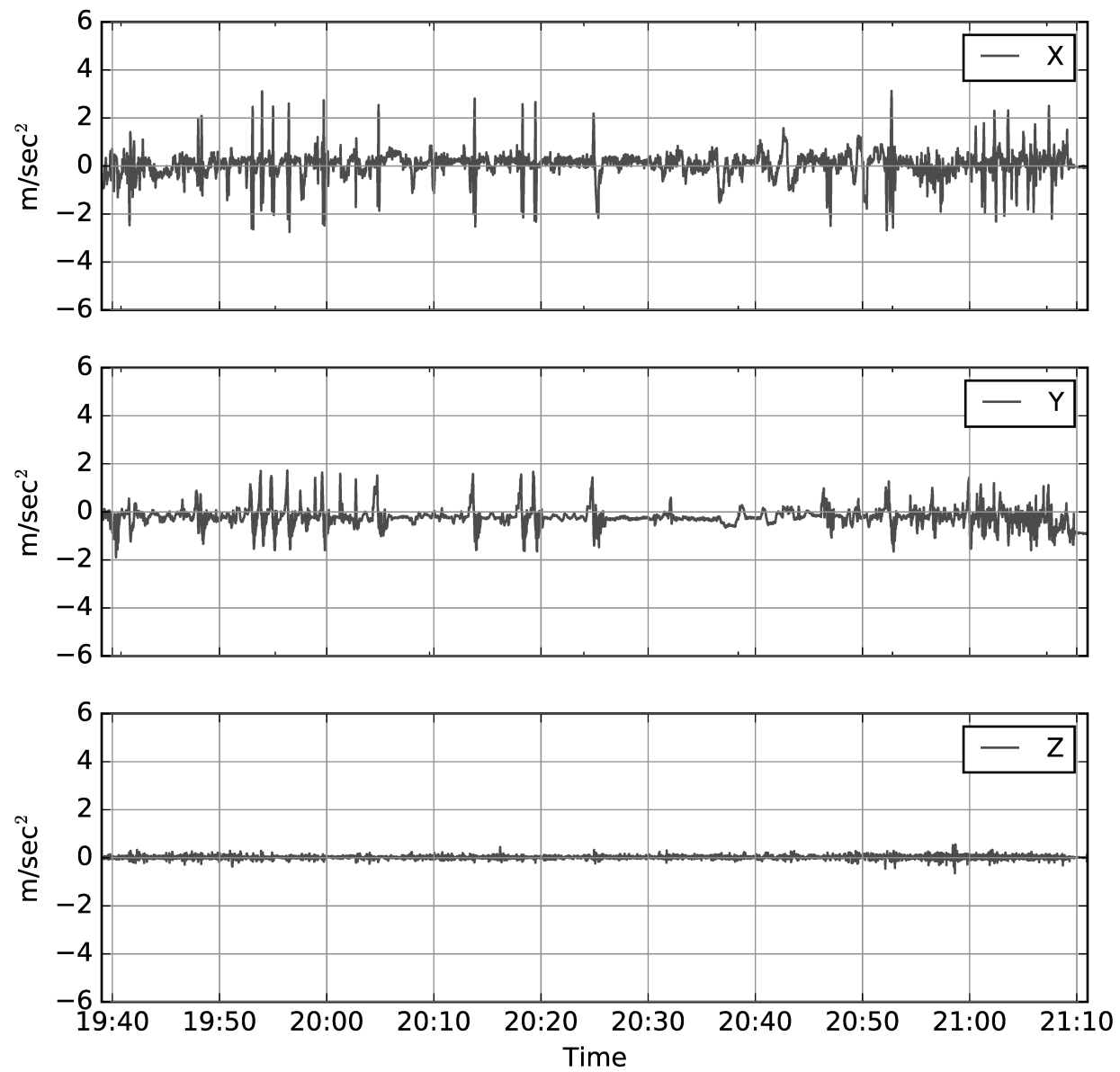
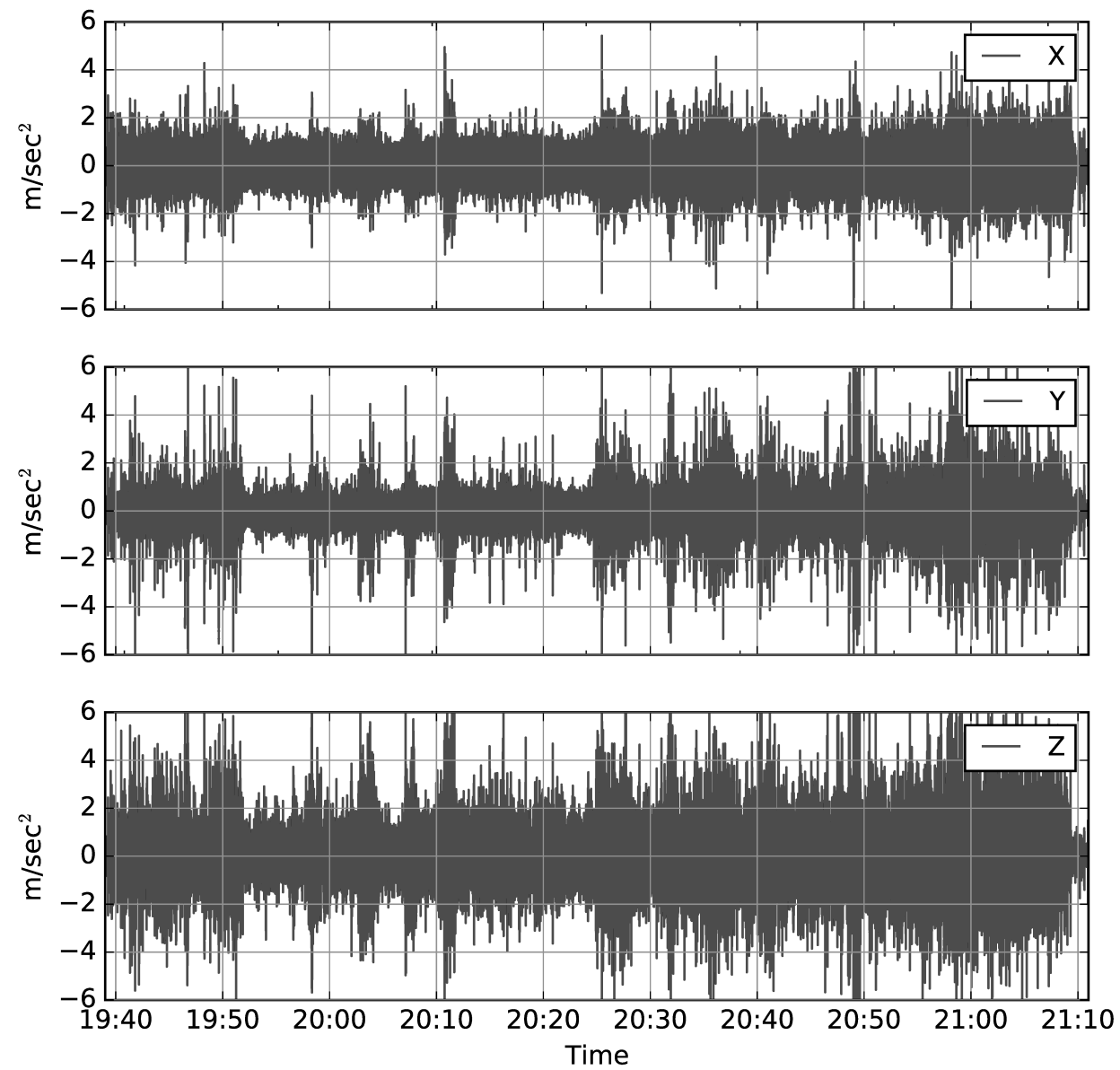


A



B



Supplementary Figure 3. Time series graphs showing sustained acceleration (A) and vibration (B) of the same preterm infants whose data are shown on Figure 1 and Supplementary Figure 2. Sustained acceleration and vibration data were separated by a low-pass and a high-pass frequency filter, respectively, as described in Methods. Most of acceleration is due to vibration; however, there were periods without vibration but significant sustained acceleration either in the front-to-back (X) direction (vehicle speeding up or slowing down), or in the side-to-side (Y) direction (vehicle turning left or right). In the vertical (Z) direction only vibration was possible.