

MAGPIE Study Supplementary materials
MAGPIE Cohort info.docx

Contents:

<i>OVERALL COHORT INFORMATION</i>		
<i>NICU Site coding (table)</i>	-	<i>Page 2</i>
<i>Samples collected per NICU site (figure)</i>	-	<i>Page 3</i>
<i>ANALYSIS COHORT INFORMATION</i>		
<i>Longitudinal samples received by NICU site (figure & table)</i>	-	<i>Page 4</i>
<i>Infants recruited to each trial arm (figure)</i>	-	<i>Page 5</i>
<i>Samples per timepoint (figures)</i>	-	<i>Page 6</i>
<i>VOC analysis cohort (table)</i>	-	<i>Page 7</i>
<i>LCMS analysis cohort (table)</i>	-	<i>Page 7</i>

NICU Site coding table

<i>Participating NICU</i>	<i>Site code</i>
Royal Victoria Infirmary, Newcastle	A
City Hospital Sunderland	B
University Hospital of North Tees	C
James Cook University Hospital	D
Bradford Royal Infirmary	E
Leeds General Infirmary	F
Queen's Medical Centre, Nottingham	G
Nottingham City Hospital	H
Birmingham Women's Hospital	I
Jessop Wing, Sheffield	J
Leicester Royal Infirmary	K
Queen Alexandra Hospital, Portsmouth	P
Princess Anne Hospital, Southampton	S

Table shows NICU sites participating in MAGPIE study and associated site codes referred to in analysis

Samples collected per NICU site

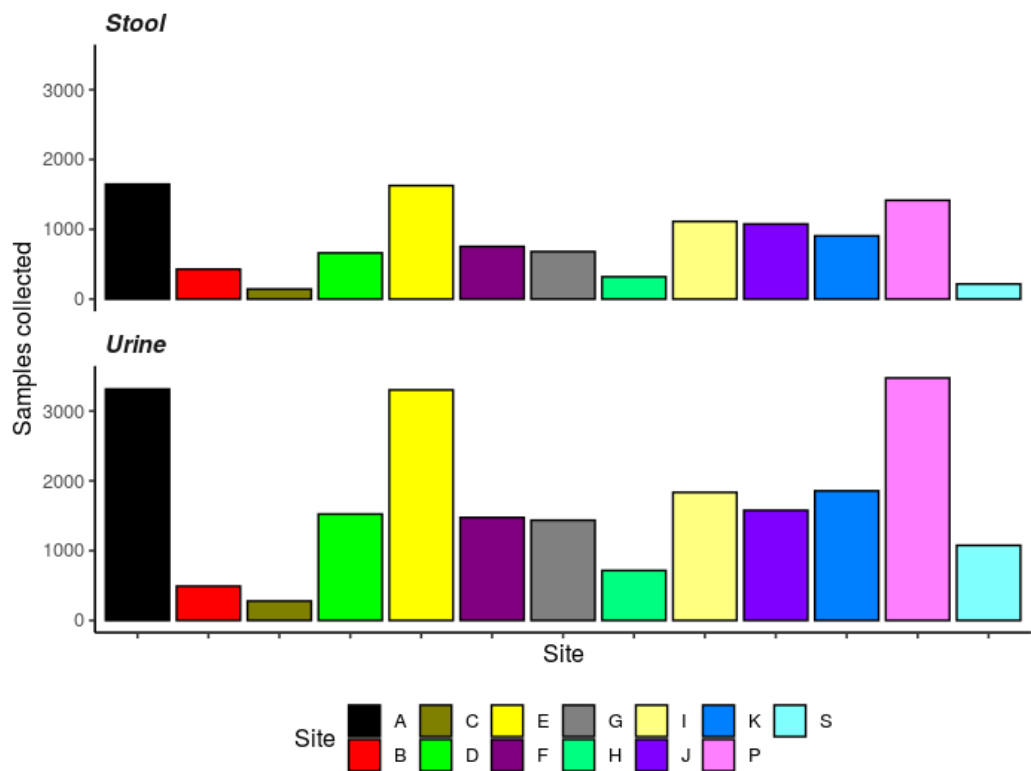


Figure shows total number of stools (upper panel) and urines (lower panel) collected per site during 2 year sampling period of MAGPIE study

Longitudinal samples received by NICU site (figure)

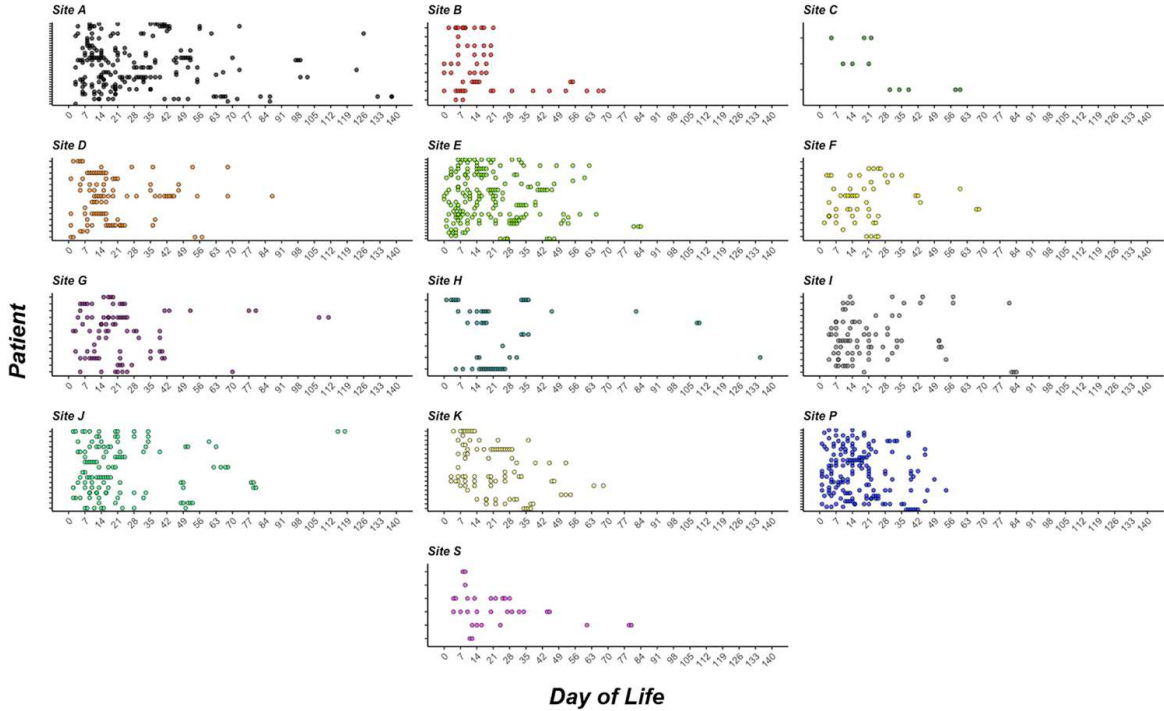


Figure illustrates longitudinal sampling across each of 13 NICU sites involved in MAGPIE recruitment. Each point represents an individual sample selected for analysis. Each panel of the figure represents a different NICU site. Samples are arranged in rows which distinguish samples obtained from one infant or another. Table below numerically outlines the data presented above.

NICU Site	Samples Analysed	Number of Patients
Site A	205	34
Site B	57	9
Site C	11	3
Site D	95	14
Site E	187	27
Site F	56	12
Site G	83	12
Site H	61	7
Site I	80	13
Site J	123	16
Site K	88	18
Site P	171	30
Site S	32	6

Infants recruited to each trial arm

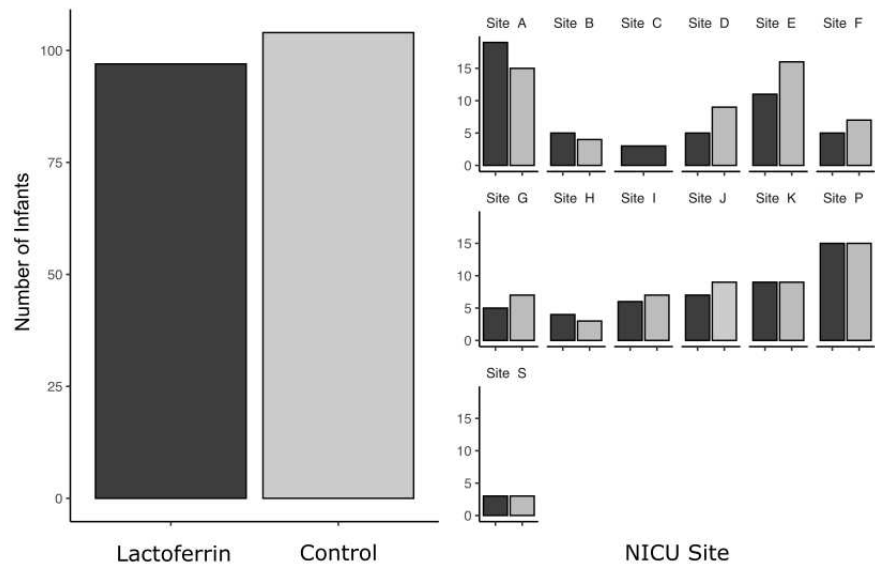


Figure shows number of infants recruited to each trial arm in the MAGPIE analysis cohort overall (left panel) and when stratified by NICU site (right panel).

Samples per timepoint

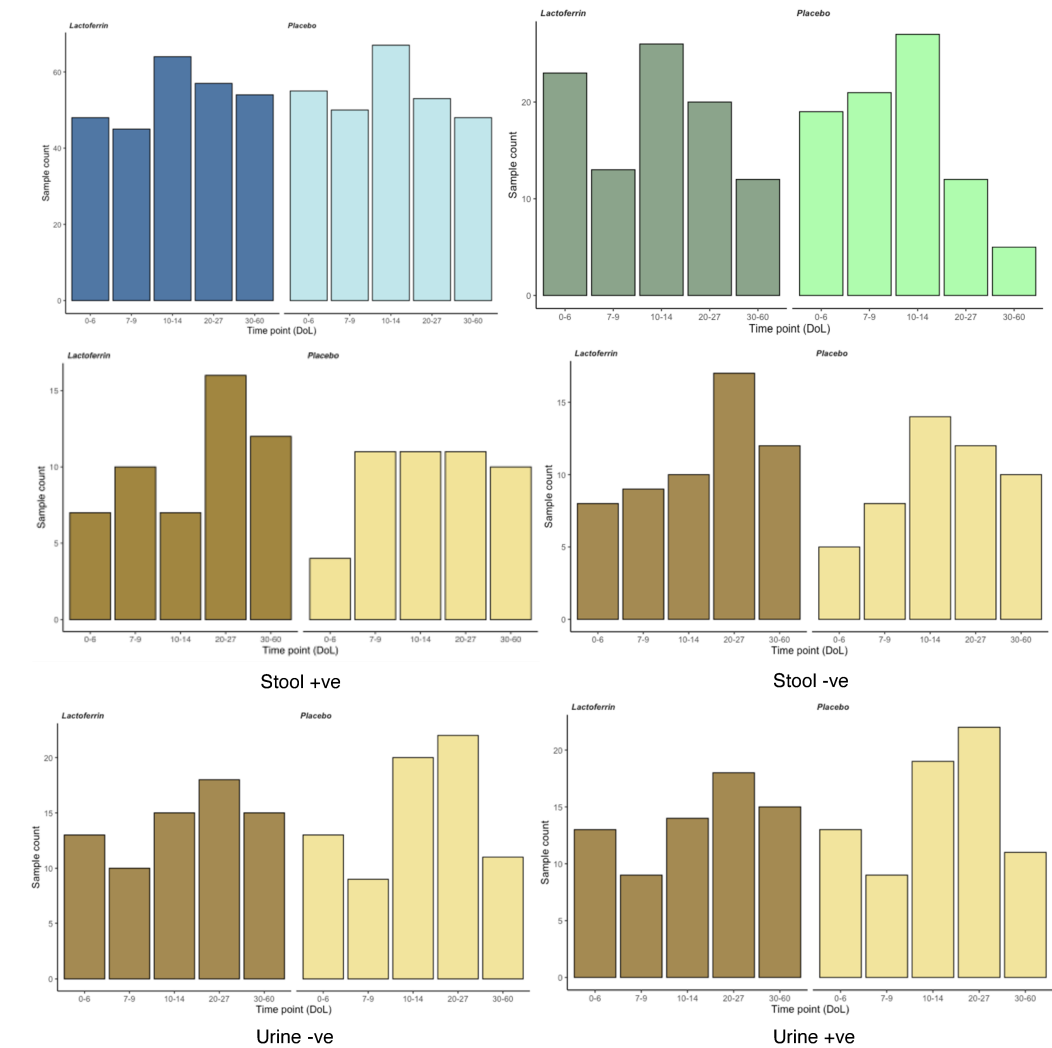


Figure shows number of samples included in MAGPIE analysis cohort at each of 5 pre-determined analysis timepoints. Sample numbers are stratified and shaded by intervention trial arm (dark = lactoferrin; light = placebo) and coloured by analysis mode (blue = microbiota; green = VOC; yellow = metabolites)

VOC Cohort

VOC			<i>Stool</i>
samples (<i>infants</i>)	ALL	<i>Total</i>	317 (117)
		<i>LF</i>	154 (62)
		<i>Ctrl</i>	160 (55)
	No Disease	<i>Total</i>	168 (69)
		<i>LF</i>	84 (38)
		<i>Ctrl</i>	84 (31)

<i>Metabolite features (IQR)</i>	<i>Total</i>	36
	<i>LF</i>	20 (14-25)
	<i>Ctrl</i>	20 (16 - 24)

Tables illustrate the number of samples (and infants) included in each trial arm of VOC (above) and LCMS (below) analysis cohorts.

LCMS Cohort

LCMS		<i>Stool</i>		<i>Urine</i>		
		<i>pos</i>	<i>neg</i>	<i>pos</i>	<i>neg</i>	
samples (infants)	ALL	Total	170 (80)	176 (81)	232 (93)	236 (93)
		LF	82 (38)	85 (39)	106 (43)	109 (44)
		Ctrl	88 (42)	91 (42)	126 (48)	127 (48)
	No Disease	Total	124 (52)	125 (52)	152 (53)	154 (53)
		LF	57 (25)	57 (25)	62 (26)	63 (26)
		Ctrl	67 (27)	68 (27)	90 (27)	91 (27)
Metabolite features	Total	5263	3510	4908	3974	