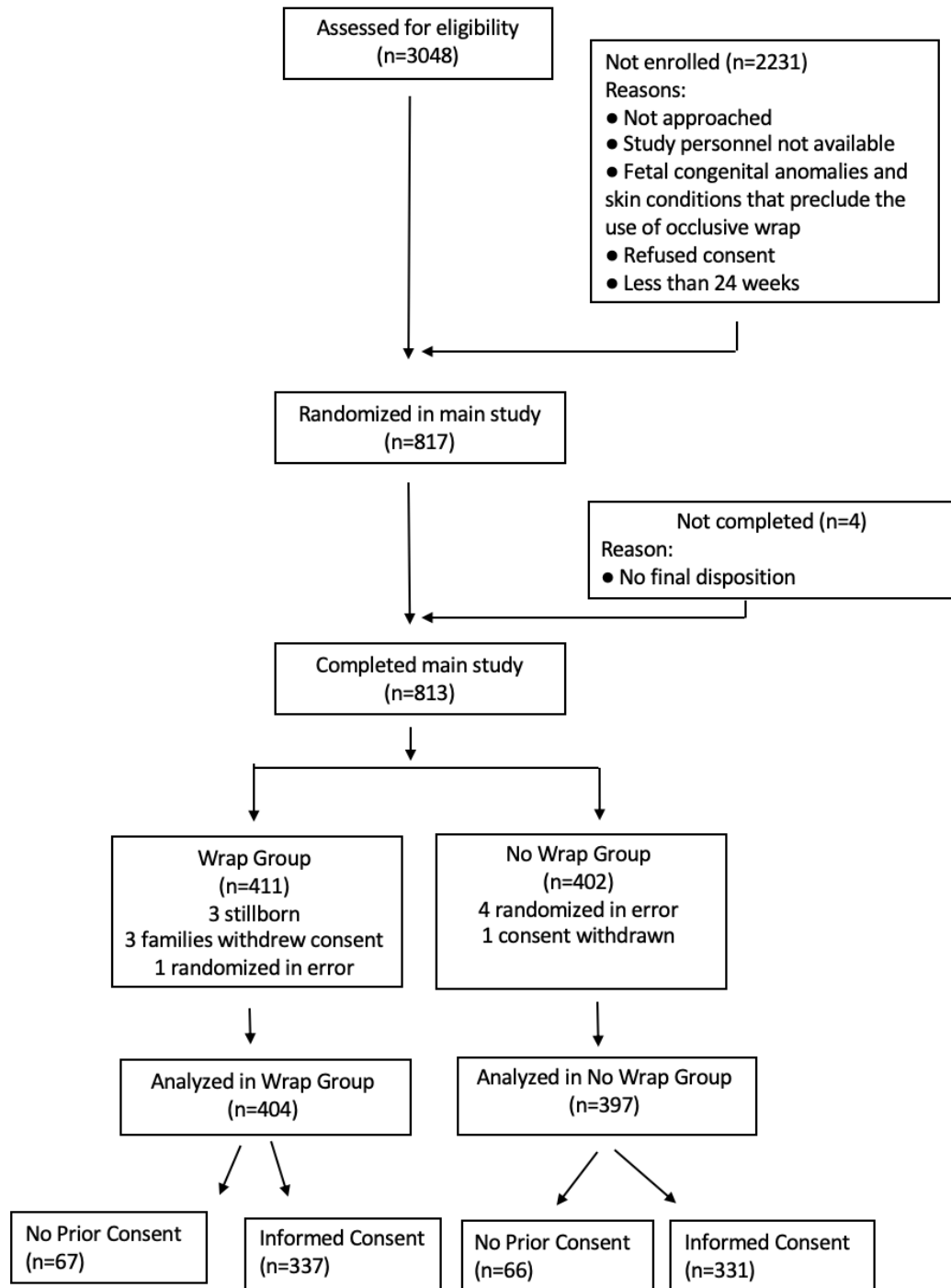


Appendix A – Figure 1 Number of infants eligible for the Vermont Oxford Network Heat Loss Prevention Trial and randomly assigned to the wrap or no wrap group¹³



Appendix B – Table 3 Characteristics of the centres in the VON HeLP Trial

HELP Trial Centres (N=38)

	N (%)
Teaching Hospital	29 (76.3)
Ownership	
Government	11 (28.9)
Non-Profit	23 (60.5)
Investor	2 (5.3)
Other	2 (5.3)
Children's Hospital	5 (13.2)
NICU Type	
A	6 (15.8)
B	23 (60.5)
C	9 (23.7)
Admissions per year 2005-2010 (median, Q1, Q3)	473,370, 662

Type A - Centres which have a restriction on assisted ventilation or which only perform minor surgery.

Type B - Centres with no restriction on assisted ventilation and which perform major surgery. Major surgery includes one or more of the following: omphalocele repair; ventriculo peritoneal shunt; repair TEF/oesophageal atresia; bowel resection/reanastomosis; meningo-myelocele repair; cardiac catheterization or PDA ligation.

Type C - Centres that perform cardiac surgery requiring bypass for newborn infants.