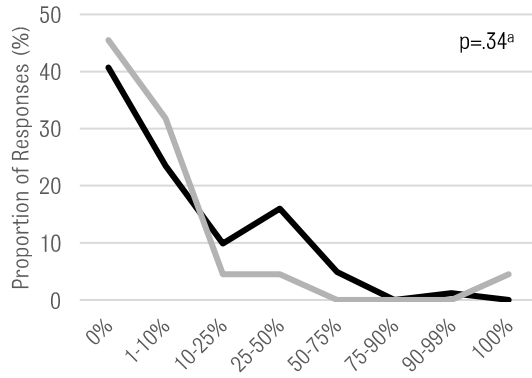


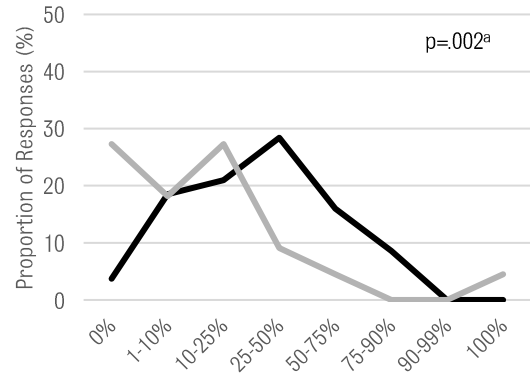
Appendix 3

Comparing estimated survival rates between city hospitals and district/provincial hospitals for different gestational age categories

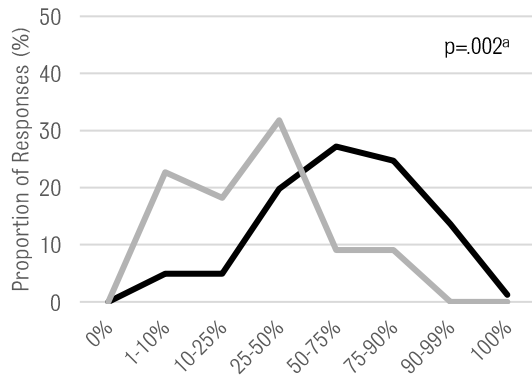
A. 23 – 24 Weeks GA



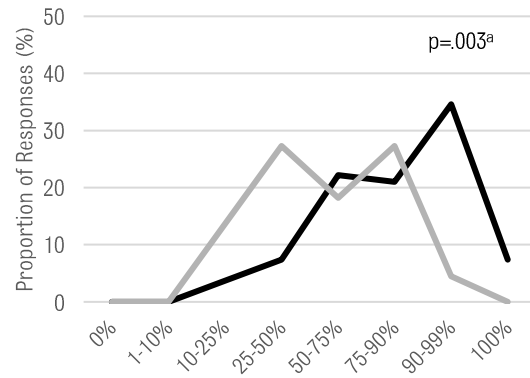
B. 25 – 26 Weeks GA



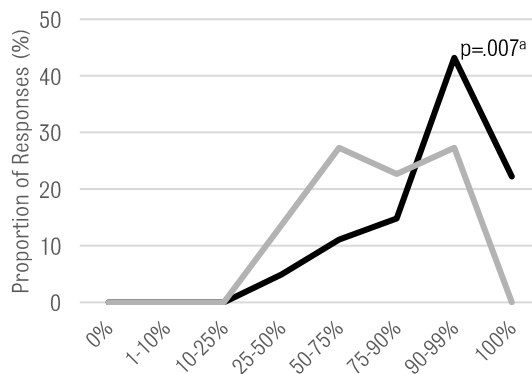
C. 27 – 28 Weeks GA



D. 29 – 30 Weeks GA



E. 31 – 32 Weeks GA



— City Hospitals
— District / Provincial Hospitals

Horizontal axes represent the estimated chance of survival if the infant is actively resuscitated. Vertical axes represent the proportion of responses (%) for a given survival rate category.

^a Fisher's Exact tests used to calculate p-values to assess for significance between City and District/Provincial survival estimates in each GA category.