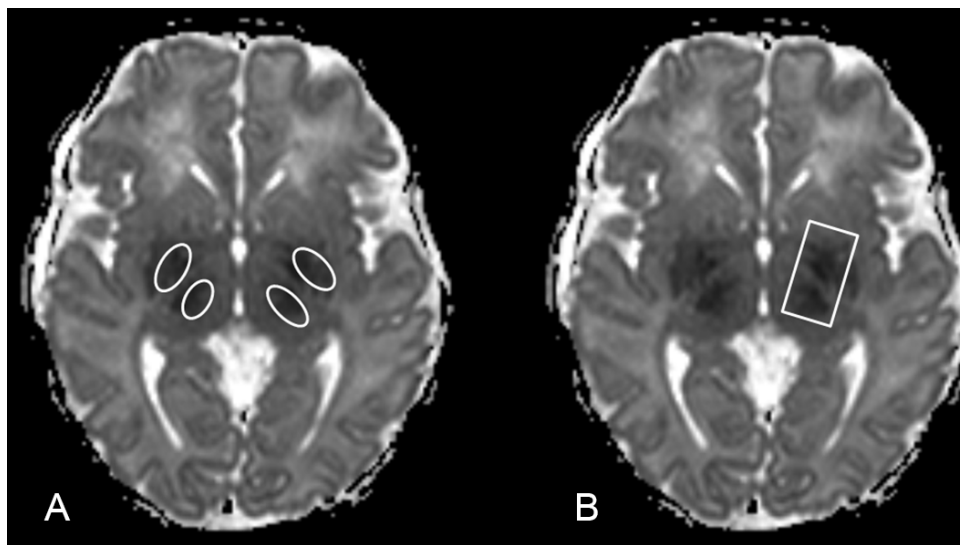


Online figure 1. A. Position of the region of interest for ADC measurements. B. Position of the region of interest for ^1H -MRS.



Online figure 2. Lactate/NAA ratios of the basal ganglia versus ADC values ($\times 10^{-6} \text{ mm}^2/\text{sec}$) of the basal ganglia measured using DWI at 2 different field strengths (1.5 and 3.0 T).

The dotted lines indicate the cutoff values obtained using the ROC analysis presented in table 2.

