



OPEN ACCESS

# Estimating neonatal length of stay for babies born very preterm

Sarah E Seaton,<sup>1</sup> Lisa Barker,<sup>2</sup> Elizabeth S Draper,<sup>1</sup> Keith R Abrams,<sup>1</sup> Neena Modi,<sup>3</sup> Bradley N Manktelow,<sup>1</sup> on behalf of the UK Neonatal Collaborative

<sup>1</sup>Department of Health Sciences, University of Leicester, Leicester, UK

<sup>2</sup>Neonatal Unit, University Hospitals of Leicester NHS Trust, Leicester, UK

<sup>3</sup>Neonatal Data Analysis Unit, Section of Neonatal Medicine, Department of Medicine, Imperial College London, London, UK

## Correspondence to

Dr Sarah E Seaton, Department of Health Sciences, University of Leicester, Leicester LE1 7RH, UK; [sarah.seaton@leicester.ac.uk](mailto:sarah.seaton@leicester.ac.uk)

Received 31 October 2017

Revised 9 March 2018

Accepted 10 March 2018

## ABSTRACT

**Objective** To predict length of stay in neonatal care for all admissions of very preterm singleton babies.

**Setting** All neonatal units in England.

**Patients** Singleton babies born at 24–31 weeks gestational age from 2011 to 2014. Data were extracted from the National Neonatal Research Database.

**Methods** Competing risks methods were used to investigate the competing outcomes of death in neonatal care or discharge from the neonatal unit. The occurrence of one event prevents the other from occurring. This approach can be used to estimate the percentage of babies alive, or who have been discharged, over time.

**Results** A total of 20 571 very preterm babies were included. In the competing risks model, gestational age was adjusted for as a time-varying covariate, allowing the difference between weeks of gestational age to vary over time. The predicted percentage of death or discharge from the neonatal unit were estimated and presented graphically by week of gestational age. From these percentages, estimates of length of stay are provided as the number of days following birth and corrected gestational age at discharge.

**Conclusions** These results can be used in the counselling of parents about length of stay and the risk of mortality.

## BACKGROUND

The ability to predict length of stay in neonatal care has become increasingly important as improvements in survival<sup>1 2</sup> have led to more very preterm babies requiring long lengths of hospitalisation. Estimates of length of stay are necessary to facilitate conversations between parents and clinicians about a baby's anticipated length of stay.

Previous research has often focused on investigating length of stay for babies who survive to discharge from neonatal care.<sup>3–5</sup> Inclusion of babies who die while in neonatal care can make length of stay estimation complex.<sup>6</sup> Other medical areas have recommended consideration of mortality and length of stay simultaneously as it can 'reflect the reality or interrelation between the outcomes'.<sup>7</sup> The exclusion of babies who die in neonatal care has been identified as a limitation of length-of-stay research in neonatal care.<sup>8 9</sup>

Currently estimates of length of stay for babies anticipated to survive are given as either 'your baby will go home around the time they were due to be born' or 'when they are able to feed and keep themselves warm'. However, these statements are not evidence based and it is unclear if they are actually

## What is already known on this topic?

- ▶ Limited research has investigated length of stay in very preterm babies admitted for neonatal care.
- ▶ Parents are often told that their baby will be discharged home 'around their due date' but it is unclear whether reality reflects this estimate.

## What this study adds?

- ▶ This study considers the risk of mortality and the length of stay of very preterm babies simultaneously, to present the full picture of neonatal care.
- ▶ For babies born at 24 and 25 weeks, length of stay should be considered alongside their risk of mortality.
- ▶ For babies born at 30 and 31 weeks, their median length of stay is a month less than the time remaining to their estimate date of delivery, indicating this anecdotal estimate of 'home by their due date' may be unhelpful in this group.

true. Irrespective of this, any results should be considered alongside the risk of mortality. Parents often report feeling anxious about whether they are ready to take their babies home, and information to support conversations about when this may happen may help alleviate some anxiety.<sup>10</sup>

Statistical methods recently introduced to neonatal research<sup>11</sup> allow the simultaneous estimation of time to discharge or death. This paper aims to provide clinically useful estimates of length of stay and the risk of mortality to assist clinicians in consultation with parents.

## METHODS

Data were obtained from the National Neonatal Research Database (NNRD), a population-based data source of information on admissions to neonatal care in England, created from information submitted by trusts to a commercial electronic patient record system.<sup>12</sup>

## Inclusion and exclusion criteria

Data were extracted on all singleton babies born at 24 to 31 weeks gestational age and admitted to neonatal units in England on the first day after



**To cite:** Seaton SE, Barker L, Draper ES, et al. *Arch Dis Child Fetal Neonatal Ed* Epub ahead of print: [please include Day Month Year]. doi:10.1136/archdischild-2017-314405

delivery and discharged from 2011 to 2014. Babies born prior to 24 weeks gestational age were not included as their care is likely to relate to local policies, and there is a lack of consistency in approach to their management across the country.<sup>13</sup>

Babies were excluded if they were discharged home before 34 weeks postmenstrual age as it is not until this point that most babies acquire the ability to fully suck feed and maintain temperature stability.<sup>14</sup> Babies that stayed in the neonatal unit longer than 6 months were also excluded. Exclusions were made for babies with unusual patterns of care including being discharged home having only received intensive care<sup>15</sup> or being discharged having never received special care. These exclusions may be data errors or may represent a very different group of babies, including those receiving palliative care. Finally, babies were excluded if their final discharge was to another specialist service, for example, cardiac or surgical unit.

Daily data were available from the NNRD for babies throughout their time in neonatal care although babies could be transferred from neonatal care for other specialist care which does not provide data to the NNRD (eg, some surgical units) and then subsequently be transferred back into neonatal care. Days of care were imputed for these unobserved days.

Deaths in neonatal care and discharge home from neonatal care were considered as two competing events, that is, the occurrence of one event means the other cannot occur.

### Statistical analysis

A flexible parametric competing risks model<sup>16–18</sup> was fitted in order to estimate the percentage of babies who were discharged or died in the neonatal unit over time.<sup>19 20</sup> From this, estimates can be made of the percentage of deaths or discharges up to specific points in time. Completed weeks of gestational age at birth was included in the model as this is known to be important for both the prediction of mortality<sup>21</sup> and length of stay.<sup>6</sup> To allow for differences in the risk of mortality or discharge between the weeks of gestational age over time, time-dependent effects were included.<sup>22</sup> Further methodological details for competing risks approaches, including their application in the estimation of neonatal length of stay, can be found elsewhere.<sup>11 20</sup>

The percentage of babies, by gestational age, dying or surviving to discharge from neonatal care was estimated over time and displayed graphically. Estimates of median length of stay can be derived from the point at which half of the events have occurred for babies who survived to discharge and for those who died in neonatal care.

### RESULTS

There were 21 631 singleton babies born at 24–31 weeks gestational age discharged from neonatal care from 2011 to 2014. Babies were excluded if they were discharged home before 34 weeks postmenstrual age (n=205, 0.9%) or if they stayed in the neonatal unit longer than 6 months (n=199, 0.9%). Exclusions were made for unusual patterns of care defined as being discharged from neonatal care having only received intensive care (n=57, 0.3%) or discharged having never received special care (n=132, 0.6%). Babies were excluded if their final discharge was to another clinical location: another (specialist) hospital not reporting to the NNRD (n=293), surgical units (n=141), cardiac care (n=24) or an unknown location (n=9). A total of 20 571 (95%) babies remained in the analysis.

Summary characteristics of the included babies are provided in [table 1](#). Over one million days of care were provided to this population of very preterm babies. Of the 20 571 babies in the

**Table 1** Summary statistics of the singleton babies who were admitted for neonatal care at birth from 24 to 31 weeks from 2011 to 2014

Total babies admitted, n	
Gestational age, % (n)	
24	5.3 (1085)
25	6.0 (1244)
26	8.4 (1722)
27	9.8 (2006)
28	13.2 (2719)
29	14.8 (3041)
30	18.3 (3770)
31	24.2 (4984)
Sex of baby, % (n)	
Male	55.0 (11 308)
Female	45 (9243)
Indeterminate	<0.1 (20)
Total days of care, n	1 164 938
Birth weight (g), mean (SD)	1224 (371)
Died in neonatal care, % (n)	
24	39.1 (424)
25	22.4 (278)
26	16.1 (278)
27	11.9 (238)
28	7.5 (204)
29	3.9 (117)
30	2.9 (108)
31	2.3 (115)

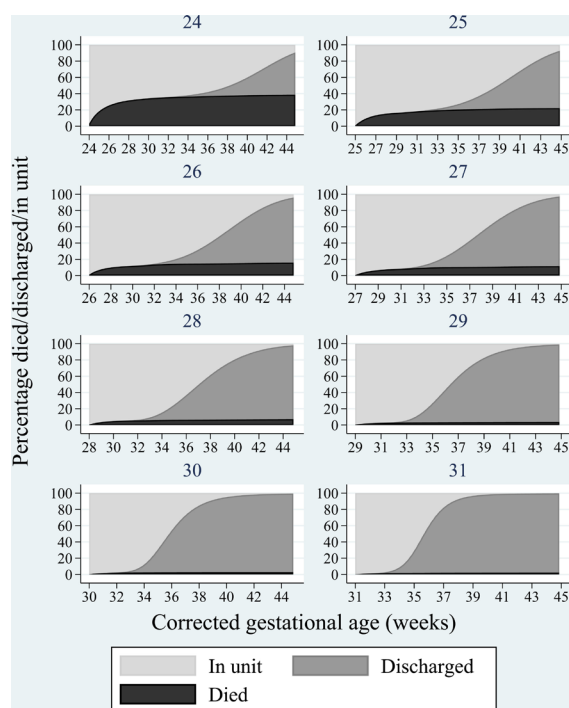
analysis, 8.6% died during their time in neonatal care. Around 24% of babies were born at 31 weeks gestational age ([table 1](#)).

### Gestational age analysis

The estimated percentages, from the flexible parametric competing risks model, are presented in graphical form as stacked plots ([figure 1](#)). The black area represents the percentage of babies who died in neonatal care, the dark grey area represents those discharged and the light grey area indicates the percentage who remain in the neonatal unit, over time. For example, for babies born at 24 weeks, the percentage of babies who had died by 30 days after birth (black area) was approximately 30% and no babies had been discharged (dark grey area). The rest of the babies remained in neonatal care ([figure 1](#)).

The median length of stay for babies was estimated by outcome of the baby and week of gestational age ([table 2](#)). The median length of stay is also presented as corrected gestational age at discharge. Babies born at 24 weeks who survived to discharge had a median length of stay of 123 days. This is slightly longer than the time remaining until their estimated date of delivery (discharge at 41.6 weeks corrected age). As week of gestational age increased the time to discharge decreased, and babies were discharged in advance of their due date. Babies born at 26–28 weeks had a median length of stay slightly shorter than the time remaining to their due date. However, babies born at 30 and 31 weeks were discharged home sooner, with a median length of stay around 30 days less than their due date.

Babies dying while in neonatal care had a median length of stay of around  $\leq 10$  days, indicating that half of deaths occur in the first 10 days after birth.



**Figure 1** The percentage of babies that died before discharge (black); were discharged from neonatal care (grey) or remain in the neonatal unit (light grey).

## DISCUSSION

This research has provided estimates of median length of stay while also considering mortality for singleton babies born very preterm. These estimates can be used in clinical practice to aid the counselling of parents about length of stay. For example, for a baby born at 26 weeks gestational age around half of deaths have occurred in the first 10 days (table 2). At around 10 days of life, and using their clinical judgement, a clinician could explain to a parent that the risk of mortality has reduced, but that their baby could be in hospital for a long time. The estimate of median length of stay for a baby of these characteristics is 92 days (82 days by day 10) but we would suggest that clinicians use a more general description, for example, ‘around two and a half months’ or in terms of their due date: ‘around a week before their due date’, to reflect that there is uncertainty in this estimate. Future qualitative research should focus on the issues of how to communicate the risk of mortality and length of stay to parents.

Anecdotally, parents are often told their baby will go home ‘around their due date’ and this research demonstrates that this

may not be the case. Babies born at 24 and 25 weeks of gestational age who survive to discharge have the longest median length of stay, staying around 123 and 107 days, respectively. For these babies, saying they may be discharged ‘around their due date’ is close to their median length of stay. However, for babies born at 30 and 31 weeks gestational age, their median length of stay is around a month shorter than the time remaining to their estimated due date. Therefore, this phrase should be used with caution as it seems that this may not accurately reflect length of stay for many very preterm babies.

Parents have reported that information about likely discharge dates improved their understanding of their baby’s progress and prepared them for discharge.<sup>23</sup> However, this information should be given at an appropriate time, in an appropriate way and supplemented with clinical judgement. Around half of the deaths occur in the first 10 days of life, and clinicians should consider this when counselling around length of stay. The estimates provided in this work are intended to complement and facilitate clinician knowledge, rather than replace it.

## Strengths and limitations

This analysis was adjusted for gestational age alone. While other factors may be important for the estimation of length of stay,<sup>6</sup> it is helpful if statistical models are simple, informative and easy to use within a clinical setting. In attempts to predict neonatal mortality, risk scores have been created which have subsequently needed to be simplified because they were too ‘cumbersome to use’ in practice.<sup>24 25</sup>

This study is one of the largest studies to investigate the prediction of length of stay in neonatal care. A strength of this work is that these results have been produced on a national basis, without biases arising from differences between networks of hospitals or individual neonatal units due to local discharge practices within units or networks. All neonatal units in England contributed their data to this study allowing consideration of the total care received by each baby, even across multiple units and transfers, without loss to follow-up. However, as the results are population based we did not consider that units may have individual approaches to length of stay and discharge planning. We did not investigate individual units as small numbers of babies, particularly at the earliest weeks of gestational age, at specific units would make estimation of their length of stay imprecise. For the same reasons we were unable to investigate specific subgroups of babies, such as those who require surgery, but future work should consider this area.

Babies discharged to receive care in other services were excluded from this work. These babies will potentially have a length of stay longer than that seen in the data reported to the NNRD. However, these babies represented a small number of discharges from neonatal care (n=467).

There has been limited work investigating neonatal length of stay in the UK, but another small study investigating length of stay in four neonatal units in the Southwest of England found similar results to this work (the ‘Train-to-Home’ package), with babies born from 27 to 33 weeks being discharged 3–4 weeks in advance of their estimated date of delivery.<sup>26</sup> Estimates of length of stay from The Neonatal Survey from 2005 to 2007, a study of neonatal intensive care in the East Midlands and Yorkshire, also found similar results to those presented in this work.<sup>5</sup> This allows the potential for clinicians to offer more accurate information to parents than just telling them that their baby will go home ‘around their due date’.

**Table 2** Median length of stay and median corrected age at discharge with range (25th, 75th centile) by outcome

Gestational age	Days to due date	Length of stay (days) of discharges	Corrected gestational age at discharge	Length of stay (days) of (days)
24	112	123 (104, 139)	41.6 (38.9, 43.9)	9 (3, 21)
25	105	107 (88, 125)	40.3 (37.6, 42.9)	10 (3, 27)
26	98	92 (74, 109)	39.1 (36.6, 41.6)	10 (3, 30)
27	91	79 (63, 96)	38.3 (36, 40.7)	11 (4, 35)
28	84	66 (52, 82)	37.4 (35.4, 39.7)	10 (3, 18)
29	77	53 (43, 66)	36.6 (35.1, 38.4)	8 (2, 40)
30	70	42 (34, 52)	36.0 (34.9, 37.4)	4 (4, 17)
31	63	34 (28, 41)	35.9 (35, 36.9)	7 (1, 7)

## Future work

Estimates of total length of stay can be useful for parental counselling, and they are also helpful in clinician discussions about a baby. However, they do not provide the entire picture of neonatal care. While in neonatal care a baby will need varying levels of care<sup>15</sup> and this can be incorporated into length-of-stay estimates. Estimates incorporating information about levels of care may be more informative for service planning and the commissioning of care. We are investigating this in further detail and initial results have been published elsewhere.<sup>27</sup> Future work should also investigate differences in length of stay between different regions and different subgroups of babies, for example, babies discharged home on oxygen.

Singleton babies born very preterm have been investigated in this work as it is unlikely to be possible to predict length of stay for singleton and multiple babies simultaneously.<sup>9</sup> The singleton, very preterm population is somewhat homogenous in terms of their prematurity which is likely to be the most important determining factor of their length of stay.<sup>6</sup> Babies born after 32 weeks gestational age may need an analysis stratified by their clinical condition, although this may still be problematic as even babies with similar clinical conditions have been seen to have varying lengths of stay within a single unit.<sup>28</sup>

There is no evidence to suggest on the optimum length of stay in a neonatal unit before discharge, nor evidence that a short length of stay should be a desirable aim.<sup>9</sup> Following an early discharge home, babies may require admission to paediatric care within a short period of time, whereas keeping them in the neonatal unit a little longer may have minimised this risk. Future research should link neonatal care with other outcomes, including subsequent admission to paediatric care, to investigate the benefits and harms of early versus late discharge from neonatal care.

## CONCLUSION

The estimation of length of stay in neonatal care should also consider the risk of mortality, especially for the very preterm. In this work, appropriate statistical methods have been used to provide estimates of length of stay which can be used by clinicians to aid the timing, and content, of discussions with parents.

**Acknowledgements** The authors thank all the neonatal units that allowed their data to be used in this work. The authors also thank the Lead Clinicians of the UK Neonatal Collaborative: Dr Matthew Babirecki, Dr Liza Harry, Dr Oliver Rackham, Dr Tim Wickham, Dr Sanaa Hamdan, Dr Aashish GDr Matthew Babirecki, Dr Liza Harry, Dr Oliver Rackham, Dr Tim Wickham, Dr Sanaa Hamdan, Dr Aashish Gupta, Dr Ruth Wigfield, Dr L M Wong, Dr Anita Mittal, Dr Julie Nycyk, Dr Phil Simmons, Dr Vishna Rasiyah, Dr Sunita Seal, Dr Ahmed Hassan, Dr Karin Schwarz, Dr Mark Thomas, Dr Ainyne Foo, Dr Aravind Shastri, Dr Graham Whincup, Dr Stephen Brearey, Dr John Chang, Dr Khairy Gad, Dr Abdul Hasib, Dr Mehdi Garbash, Dr Nicci Maxwell, Dr David Gibson, Dr Pauline Adiotomre, Dr Jamal S Ahmed, Dr Abby Deketelaere, Dr Ramnik Mathur, Dr K Abdul Khader, Dr Ruth Shepherd, Dr Abdus Mallik, Dr Belal Abuzgia, Dr Mukta Jain, Dr Simon Pirie, Dr Stanley Zengeya, Dr Timothy Watts, Dr C Jampala, Dr Cath Seagrave, Dr Michele Cruwys, Dr Hilary Dixon, Dr Narendra Aladangady, Dr Hassan Gaili, Dr Matthew James, Dr M Lal, Dr Ambadkar, Dr Patti Rao, Dr Khalid Mannan, Dr Ann Hickey, Dr Dhaval Dave, Dr Nader Elgharably, Dr Meera Lama, Dr Lawrence Miall, Dr Jonathan Cusack, Dr Venkatesh Kairamkonda, Dr Jayachandran, Dr Kollipara, Dr J Kefas, Dr Bill Yoxall, Dr Jennifer Birch, Dr Gail Whitehead, Dr Bashir Jan Muhammad, Dr Aung Soe, Dr I Misra, Dr Tilly Pillay, Dr Imdad Ali, Dr Mark Dyke, Dr Michael Selter, Dr Nagesh Panasa, Dr Lesley Alsford, Dr Alan Fenton, Dr Subodh Gupta, Dr Richard Nicholl, Dr Steven Wardle, Dr Tim McBride, Dr Naveen Shettihalli, Dr Eleri Adams, Dr Seif Babiker, Dr Margaret Crawford, Dr Minesh Khashu, Dr Caitlin Toh, Dr M Hall, Dr P Amess, Dr Elizabeth Sleight, Dr Charlotte Groves, Dr Sunit Godambe, Dr Dennis Bosman, Dr Barbara Piel, Dr Banjoko, Dr N Kumar, Dr A Manzoor, Dr Wilson Lopez, Dr Angela D'Amore, Dr Shameel Mattara, Dr Christos Zipitis, Dr Peter De Halpert, Dr Paul Settle, Dr Paul Munyard, Dr Gitika Joshi, Dr David Bartle, Dr D Schapira, Dr Joanne Fedee, Dr Natasha Maddock, Dr Richa Gupta, Dr Deshpande, Dr Charles Godden, Dr Stephen Jones, Dr Mahadevan, Dr Nick Brown,

Dr Kirsten Mack, Dr Rob Bolton, Dr A Khan, Dr Paul Mannix, Dr Charlotte Huddy, Dr Salim Yasin, Dr Sian Butterworth, Dr Ngozi Edi-Osagie, Dr Bala Thyagarajan, Dr Peter Reynolds, Dr Nick Brennan, Dr Carrie Heal, Dr Sanjay Salgia, Dr Majd Abu-Harb, Dr Jacqueline Birch, Dr Chris Knight, Dr Simon Clark, Dr V Van Sommen, Dr Nandiran Ratnavel, Dr Mala Raman, Dr Hamudi Kizat, Dr Sara Watkin, Dr Kate Blake, Dr Jauro Kuna, Dr Alison Moore, Dr Hari Kumar, Dr Gopi Vemuri, Dr Chris Rawlingson, Dr Delyth Webb, Dr Bird, Dr Sankara Narayanan, Dr Jason Gane, Dr Elizabeth Eyre, Dr Ian Evans, Dr Rekha Sanghavi, Dr Caroline Sullivan, Dr Laweh Amegavie, Dr Wynne Leith, Dr Vimal Vasu, Dr Andrew Gallagher, Dr Katia Vamvakiti, Dr Megan Eaton and Dr Guy Millman.

**Contributors** SES conceived the idea and undertook the analysis, under the supervision of BNM, ESD and KRA. SES wrote the first draft of the paper. NM and LB provided clinical context and medical insight. All authors contributed towards the manuscript, revising it critically for intellectual content. All authors have read and approved this final version of the manuscript.

**Funding** This paper presents independent research funded by the National Institute for Health Research (NIHR).

**Disclaimer** The views expressed are those of the author(s) and not necessarily those of the NHS, the NIHR or the Department of Health.

**Competing interests** SS is funded by a National Institute for Health Research Doctoral Research Fellowship award (DRF-2013-06-011). KA is partially supported by the National Institute for Health Research (NIHR) as a senior investigator (NF-SI-0512-10159).

**Ethics approval** Research ethics approval was granted for this study from Lancaster, North West Research Ethics Committee (REC reference: 14/NW/0349).

**Provenance and peer review** Not commissioned; externally peer reviewed.

**Data sharing statement** Information on how to obtain data from the NNRD can be found at: <http://www.imperial.ac.uk/neonatal-data-analysis-unit/neonatal-data/utiilising-the-nnr/>.

**Open Access** This is an Open Access article distributed in accordance with the terms of the Creative Commons Attribution (CC BY 4.0) license, which permits others to distribute, remix, adapt and build upon this work, for commercial use, provided the original work is properly cited. See: <http://creativecommons.org/licenses/by/4.0/>

© Article author(s) (or their employer(s) unless otherwise stated in the text of the article) 2018. All rights reserved. No commercial use is permitted unless otherwise expressly granted.

## REFERENCES

- Field DJ, Dorling JS, Manktelow BN, *et al*. Survival of extremely premature babies in a geographically defined population: prospective cohort study of 1994-9 compared with 2000-5. *BMJ* 2008;336:1221-3.
- Manktelow BN, Seaton SE, Field DJ, *et al*. Population-based estimates of in-unit survival for very preterm infants. *Pediatrics* 2013;131:e425-32.
- Altman M, Vanpée M, Cnattingius S, *et al*. Moderately preterm infants and determinants of length of hospital stay. *Arch Dis Child Fetal Neonatal Ed* 2009;94:F414-8.
- Lee HC, Bennett MV, Schulman J, *et al*. Accounting for variation in length of NICU stay for extremely low birth weight infants. *J Perinatol* 2013;33:872-6.
- Manktelow B, Draper ES, Field C, *et al*. Estimates of length of neonatal stay for very premature babies in the UK. *Arch Dis Child Fetal Neonatal Ed* 2010;95:F288-92.
- Seaton SE, Barker L, Jenkins D, *et al*. What factors predict length of stay in a neonatal unit: a systematic review. *BMJ Open* 2016;6(10):e010466.
- Taylor SL, Sen S, Greenhalgh DG, *et al*. A competing risk analysis for hospital length of stay in patients with burns. *JAMA Surg* 2015;150:450-6.
- Bender GJ, Koestler D, Ombao H, *et al*. Neonatal intensive care unit: predictive models for length of stay. *J Perinatol* 2013;33:147-53.
- Lee HC, Bennett MV, Schulman J, *et al*. Estimating Length of Stay by Patient Type in the Neonatal Intensive Care Unit. *Am J Perinatol* 2016;33:751-7.
- Turner M, Winefield H, Chur-Hansen A. The emotional experiences and supports for parents with babies in a neonatal nursery. *Adv Neonatal Care* 2013;13:438-46.
- Hinchliffe SR, Seaton SE, Lambert PC, *et al*. Modelling time to death or discharge in neonatal care: an application of competing risks. *Paediatr Perinat Epidemiol* 2013;27:426-33.
- Gale C, Morris I; Neonatal Data Analysis Unit (NDAU) Steering Board. The UK National Neonatal Research Database: using neonatal data for research, quality improvement and more. *Arch Dis Child Educ Pract Ed* 2016;101:216-8.
- Smith L, Draper ES, Manktelow BN, *et al*. Comparing regional infant death rates: the influence of preterm births <24 weeks of gestation. *Arch Dis Child Fetal Neonatal Ed* 2013;98:F103-7.
- Phibbs CS, Schmitt SK. Estimates of the cost and length of stay changes that can be attributed to one-week increases in gestational age for premature infants. *Early Hum Dev* 2006;82:85-95.

- 15 British Association of Perinatal Medicine. *BAPM categories of care* 2011 <http://www.bapm.org/publications/> (Last accessed: 20/02/2017).
- 16 Royston P. A strategy for modelling the effect of a continuous covariate in medicine and epidemiology. *Stat Med* 2000;19:1831–47.
- 17 Royston P, Ambler G, Sauerbrei W. The use of fractional polynomials to model continuous risk variables in epidemiology. *Int J Epidemiol* 1999;28:964–74.
- 18 Durrleman S, Simon R. Flexible regression models with cubic splines. *Stat Med* 1989;8:551–61.
- 19 Royston P, Parmar MK. Flexible parametric proportional-hazards and proportional-odds models for censored survival data, with application to prognostic modelling and estimation of treatment effects. *Stat Med* 2002;21:2175–97.
- 20 Hinchliffe SR, Lambert PC. Flexible parametric modelling of cause-specific hazards to estimate cumulative incidence functions. *BMC Med Res Methodol* 2013;13:1–14.
- 21 Medlock S, Ravelli AC, Tamminga P, et al. Prediction of mortality in very premature infants: a systematic review of prediction models. *PLoS One* 2011;6:e23441.
- 22 Lambert PC, Royston P. Further development of flexible parametric models for survival analysis. *Stata Journal* 2009;9:265–90.
- 23 Ingram JC, Powell JE, Blair PS, et al. Does family-centred neonatal discharge planning reduce healthcare usage? A before and after study in South West England. *BMJ Open* 2016;6:e010752.
- 24 Richardson DK, Gray JE, McCormick MC, et al. Score for Neonatal Acute Physiology: a physiologic severity index for neonatal intensive care. *Pediatrics* 1993;91:617–23.
- 25 Richardson DK, Corcoran JD, Escobar GJ, et al. SNAP-II and SNAPPE-II: Simplified newborn illness severity and mortality risk scores. *J Pediatr* 2001;138:92–100.
- 26 Fleming PJ, Ingram J, Johnson D, et al. Estimating discharge dates using routinely collected data: improving the preparedness of parents of preterm infants for discharge home. *Arch Dis Child Fetal Neonatal Ed* 2017;102.
- 27 Seaton SE, Barker L, Draper ES, et al. Modelling Neonatal Care Pathways for Babies Born Preterm: An Application of Multistate Modelling. *PLoS One* 2016;11:e0165202.
- 28 Shetty S, Kennea N, Desai P, et al. Length of stay and cost analysis of neonates undergoing surgery at a tertiary neonatal unit in England. *Ann R Coll Surg Engl* 2016;98:56–60.



## Estimating neonatal length of stay for babies born very preterm

Sarah E Seaton, Lisa Barker, Elizabeth S Draper, Keith R Abrams, Neena Modi and Bradley N Manktelow

*Arch Dis Child Fetal Neonatal Ed* published online March 27, 2018

---

Updated information and services can be found at:

<http://fn.bmj.com/content/early/2018/03/27/archdischild-2017-314405>

---

*These include:*

### References

This article cites 26 articles, 9 of which you can access for free at:  
<http://fn.bmj.com/content/early/2018/03/27/archdischild-2017-314405#ref-list-1>

### Open Access

This is an Open Access article distributed in accordance with the terms of the Creative Commons Attribution (CC BY 4.0) license, which permits others to distribute, remix, adapt and build upon this work, for commercial use, provided the original work is properly cited. See:  
<http://creativecommons.org/licenses/by/4.0/>

### Email alerting service

Receive free email alerts when new articles cite this article. Sign up in the box at the top right corner of the online article.

---

### Topic Collections

Articles on similar topics can be found in the following collections

[Open access](#) (76)

---

### Notes

---

To request permissions go to:

<http://group.bmj.com/group/rights-licensing/permissions>

To order reprints go to:

<http://journals.bmj.com/cgi/reprintform>

To subscribe to BMJ go to:

<http://group.bmj.com/subscribe/>